



AGArangeusa.com

THE AGA CASCADE HOOD



SPECIFICATIONS

Hood Style
Concave

Product Dimensions:

Hood Width x Depth x Height
36"W x 24"D x 30"H (600 cfm/8" collar)
48"W x 24"D x 30"H (1200 cfm/10" collar)

Duct Cover Options

12", 24" and 48" Tall

Custom Duct Cover heights are available

Product Weight:

36"(30"H) : 97 lbs
48"(30"H) : 124 lbs

MODELS:

36" : **AH3630CAC**
48" : **AH4830CAC**

Hood Sone Level:

Ranges from 5-7

Electrical Requirements:

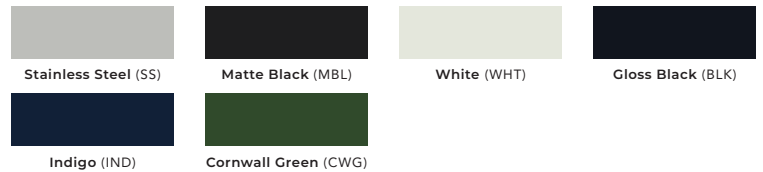
600 CFM models draw approx. 2.7 Amps
1200 CFM models draw approx. 5.4 Amps



Hood also available without Banding

COLOR FINISH OPTIONS

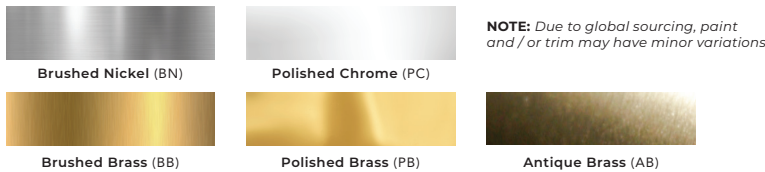
CLASSIC COLOR COLLECTION



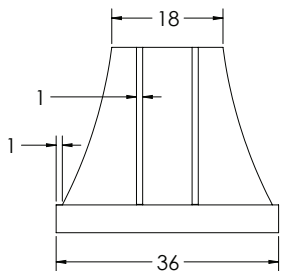
SOHO COLOR COLLECTION



TRIM FINISH OPTIONS

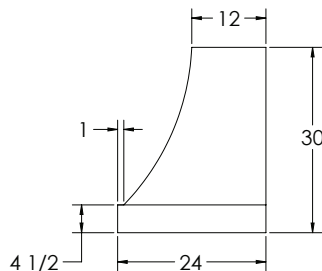


DIMENSIONAL DRAWINGS



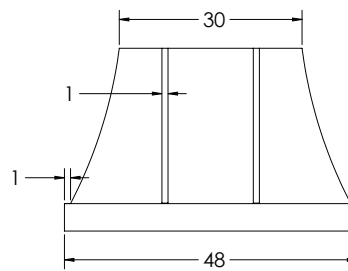
36" FRONT VIEW

Hood also available without Banding



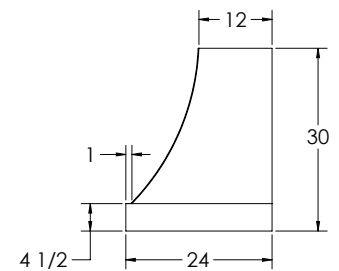
36" SIDE VIEW

Hood also available without Banding



48" FRONT VIEW

Hood also available without Banding



48" SIDE VIEW

Hood also available without Banding



THE AGA CASCADE HOOD

PRODUCT FEATURES

Quiet Operation

Large 3 speed blower operates at lower RPM reducing the sound level.

Lighting

Bright LED lighting offers natural looking, 3000K color spectrum. The 36" hood features 2 lights, the 48" hood features 3 lights.

Ease of Operation

Electronic touch controls for 3 speed blower and LED lights.

Easy Cleaning

Dishwasher safe, commercial style baffle filters for effectively removing airborne contaminants.

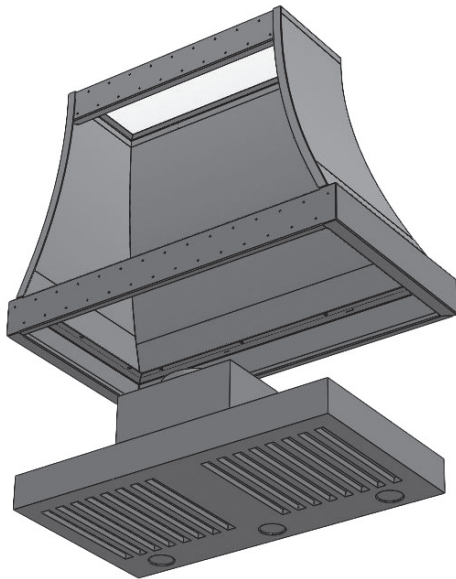
Detergent inlet holes and grease exit holes in baffle filters for superior dishwasher cleaning.

Flexible Installation

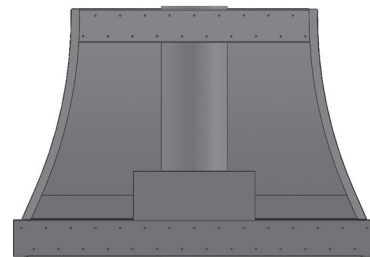
Mounting bars at top and bottom allow for attaching to stud supports. Open top and back design for centered duct location or offset top duct and/or rear offset discharge.

Energy Efficient Operation

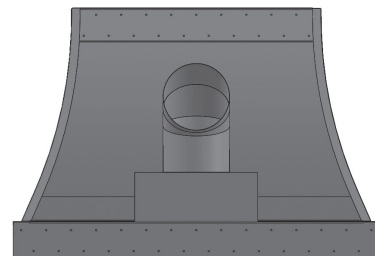
LED light bulbs draw only 6 watts each and energy efficient motors draw only 2.5 amps.



Rear view showing liner is easily removed and reinstalled for simply mounting of hood shell to the wall



Rear view of standard, centered top venting. Open top design allowing simple R/L offset top ducting



Rear view of standard, centered rear venting. Open back design allowing simple R/L offset rear ducting