

48" ALL GAS SEALED BRASS BURNER GRAND CHEF RANGE

MORE SPACE? MORE POSSIBILITIES.

The most popular Capital size, the Capital Chef's Collection 48" Grand Chef Range offers the next level in versatility for any and all occasions. Featuring dual ovens with independent convection in the main oven, the 48" Grand Chef Range might be just right for you.

48" SEALED BRASS BURNER RANGETOP FEATURES

- Up to eight Accu-Heat™ sealed brass burners rated at 19,000 BTUs each, creates powerfully consistent heat
- All burners turn down to a true simmer
- Porcelain-coated cast iron grates
- Optional wok available
- Griddle and BBQ grills come with stainless steel covers

48" GRAND CHEF ALL GAS OVEN FEATURES

- Five rack positions
- Dual 40 Watt oven lights
- Broil Pan included
- Black porcelain with Titanium speck oven interiors
- 1-1/4" diameter professional-style handles
- Extra-large viewing windows with embossed design
- Heavy-duty oven door hinges
- Height and leveling adjustability
- Self-clean convection oven (large oven only)
- Large oven: 4.5 cu. ft. cavity
- Companion oven: 2.0 cu. ft. cavity
- 30,000 BTU bake burner for uniform cooking
- 18,000 BTU Infrared broiler behind glass
- Tru-Temp™ convection oven with separate fan On/Off switch (large oven only)
- Rotomatic™ motorized rotisserie system (large oven only)
- Heavy-duty cast stainless steel rotisserie prongs
- Stainless steel rotisserie spit rod
- Three EZ-Glide™ oven racks

GSCR484BG



GRAND CHEF FEATURES



SEALED BRASS BURNER
All new sealed brass burner.



INFRA-BROIL™
Our 18,000 BTU Grand Chef Infra-Broil™ grills, toasts, broils, browns, melts, and roasts.



TRU-TEMP™ CONVECTION COOKING
Capital's convection design makes optimal use of the oven cavity and provides precise, even baking.

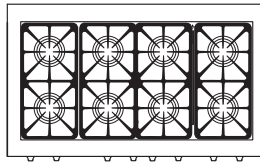


ROTOMATIC™ ROTISSERIE
Capital's patented in-oven motorized rotisserie system allows you to cook delicious self-basted roasts and poultry in your kitchen year-round.

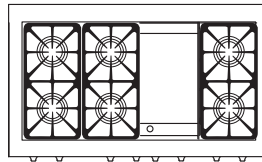
48" ALL GAS SEALED BRASS BURNER GRAND CHEF RANGE

MORE SPACE? MORE POSSIBILITIES.

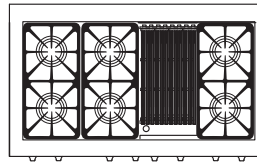
SEALED BURNER RANGE CONFIGURATIONS



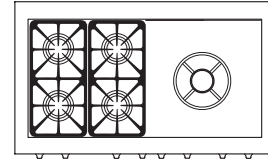
GSCR488



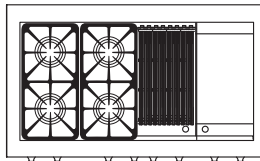
GSCR484G2



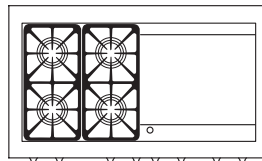
GSCR484B2



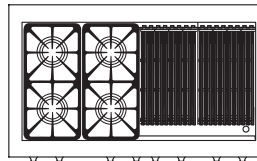
GSCR484W (Sealed Wok Burner)



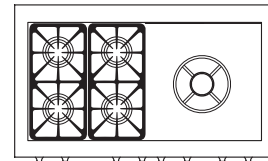
GSCR484BG



GSCR484GG



GSCR484BB



GSCR484CW (Open Wok Burner)

Capital Cooking offers customized placements of your burners, griddle, BBQ grill, or power wok. Ask your Capital dealer for details.

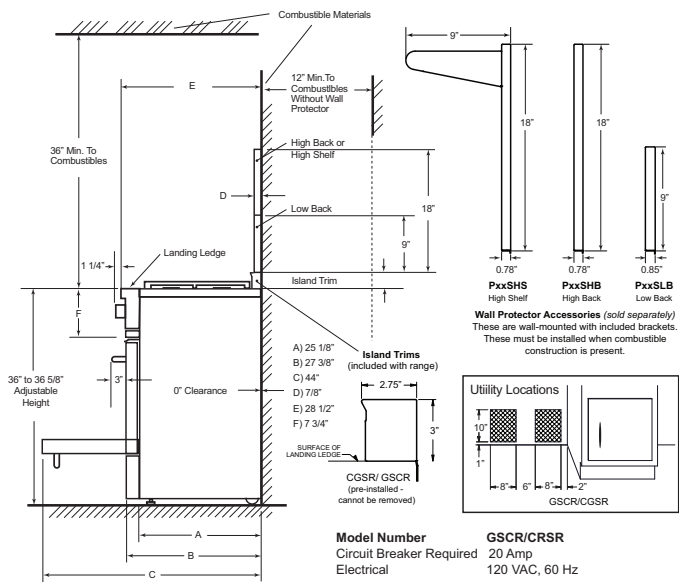
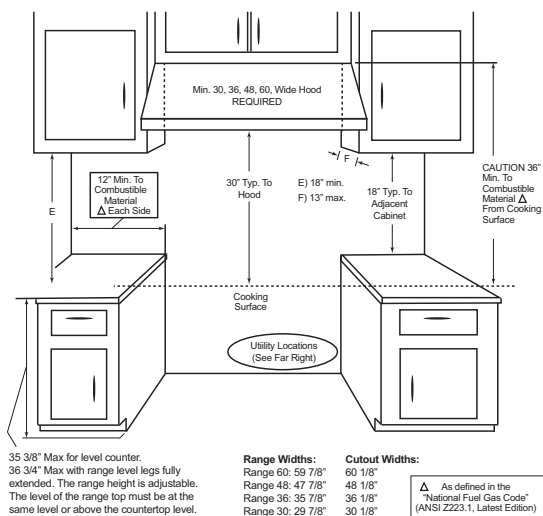
COLOR AND FINISH OPTIONS

All indoor appliances from Capital Cooking are available in a timeless stainless steel, 10 standard colors, as well as 206 custom RAL colors. Four modern handle and knob finish options are also available.



1. Brass Polished
2. Chrome Polished
3. Brass Satin
4. Chrome Satin

CUTOUT DIMENSIONS



GAS REQUIREMENTS : 1/2" NPT gas connection. Minimum gas supply is 7" water column for natural gas and 11" for propane. Operating pressure at the manifold is 5" water column for natural gas and 10" for propane. All units include a gas regulator. The installer must provide a shut-off valve at the rear of the appliance with easy access to shut off the gas for service. High-altitude kits and gas conversion kits are available through the Capital parts department.

For more details, please visit our website: www.capital-cooking.com

All product details and specifications are subject to change without notice.

