



**Please read the instruction manual and save it for future reference.**


**To reduce the risk of fire, electric shock or injury to persons during the use of your appliance, follow the basic precautions, including the following:**

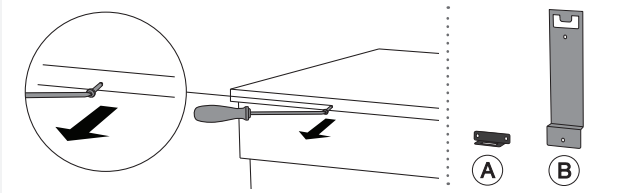
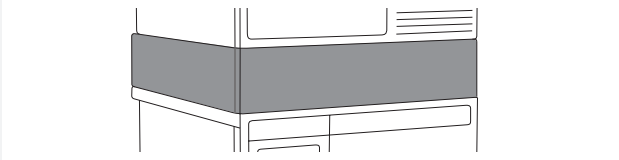
- Before using the product for the first time, please read all instructions and save them for future reference.
- Instructions for use are available on our website at [www.asko.com](http://www.asko.com).
- The product is intended solely for household use.
- Do not repair and do not attempt to replace any part of the product or to service it in any other way, unless this is expressly recommended in the instructions for use and maintenance or in the instructions for user repairs. Also, do not attempt any repairs or servicing if you do not understand the instructions entirely or if you lack the skills for such repairs.
- Any product repair and maintenance pertaining to safety or performance should be done by trained experts.
- In case of incorrect use or product servicing by an unauthorized person, the user shall be solely responsible for covering any damage or expenses.
- Do not allow children to play with the product or on the product. Watch children closely when you are using the product near them.
- The product is not intended for use by persons (including children) with impaired physical or mental capabilities or lack of experience and knowledge. Such persons should be instructed on safe use of the product by the person responsible for their safety.
- Do not let children younger than three years to come near the appliance, unless they are under constant supervision.
- Do not install or store the product in places where it could be exposed to the elements.

**The following symbols are used throughout the manual and they have the following meanings:**

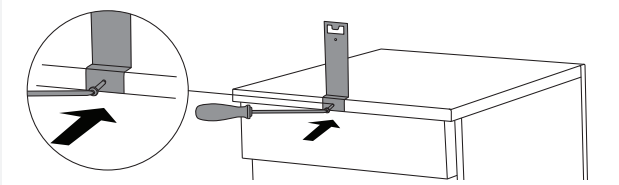
	Information, advice, tip, or recommendation
	Warning – general danger
	Warning – danger of electric shock

# INSTALLING A HIDDEN HELPER BETWEEN A WASHING MACHINE AND A DRYER


 The hidden helper may only be used with a washing machine and a dryer by the manufacturer Asko Appliances.

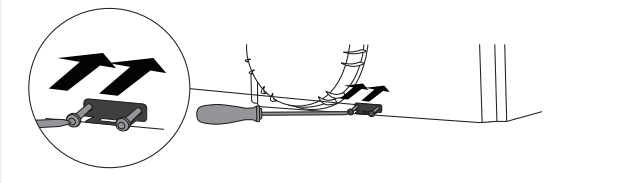


**1** Undo the middle screw on the back side of the washing machine.




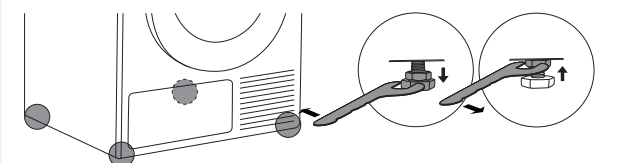
**2** Attach the anti-tip bracket (B) to the upper edge of the back of the washing machine.

 The anti-tip bracket (B) is supplied in the hidden helper.

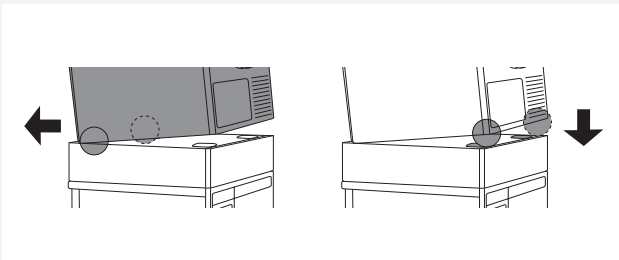


**3** Attach the anti-tip bracket (A) to the lower edge of the back of the dryer.

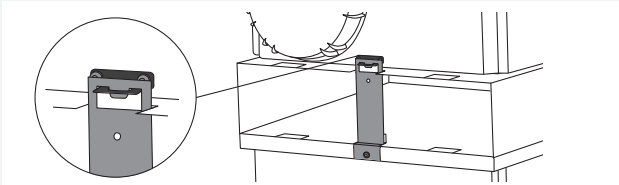
 The anti-tip bracket (A) is supplied in the dryer cardboard box.




**4** Before placing the dryer onto the hidden helper, undo the dryer legs by five turns from the fully retracted position, and tighten the safety nuts all the way.




**5** Place the Hidden Helper and make sure it is aligned with WM (washing machine) or TD (tumble dryer). Lift the dryer and tilt it towards the back. Insert the back feet of the dryer into the slots in the hidden helper and push the dryer back towards the back of the hidden helper until the anti-tip bracket (A) locks in with the anti-tip bracket (B). Anti-tip bracket position so that the bracket on the dryer and the bracket on the washing machine are fully aligned.

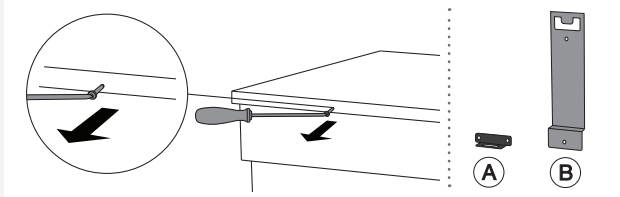
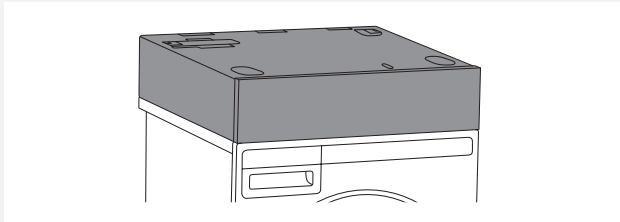


**6** Final installation of the hidden helper between the washing machine and dryer, from the back.

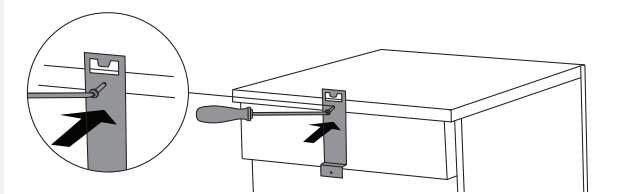
 If the hidden helper is installed between a washing machine and a dryer that are already stacked in a tower, first follow the instructions for dismantling the tower. This means that the anti-tip bracket has to be removed first.

# INSTALLING A HIDDEN HELPER ONTO THE APPLIANCE


 The hidden helper may only be used with a washing machine and a dryer by the manufacturer Asko Appliances.

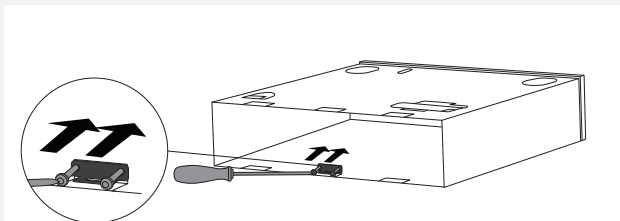


**1** Undo the middle screw on the back side of the washing machine or dryer.




**2** Attach the anti-tip bracket **(B)** to the washing machine or dryer.

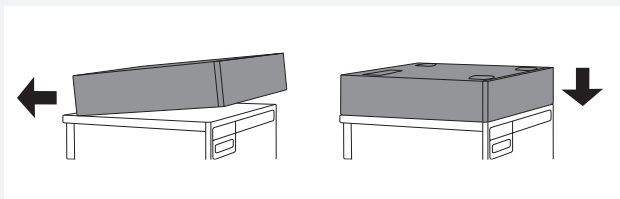
 The anti-tip bracket **(B)** is supplied in the hidden helper



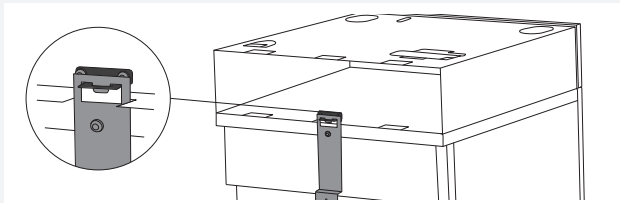
**3** Using a screw, fasten the anti-tip bracket **(A)** onto the hidden helper.

 The anti-tip bracket **(A)** is supplied in the dryer cardboard box.


If you are installing the hidden helper onto a washing machine, then the anti-tip bracket **(A)** has to be purchased from the service unit.



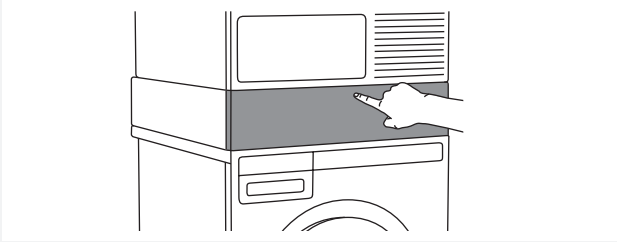
**4** Install the hidden helper onto a washing machine or dryer by lifting the front part of the hidden helper and push it towards the back until the anti-tip bracket **(A)** locks into the anti-tip bracket **(B)**. Then, lower the hidden helper and make sure it is aligned with the washing machine and dryer.



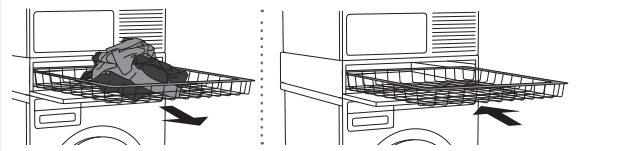
**5** Final installation of the hidden helper on a washing machine or dryer, from the back.

 Before tightening the anti-tip bracket, make sure the edges of the hidden helper are accurately aligned with the edges of the washing machine or dryer.

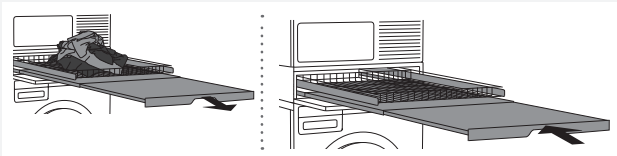
## USING A HIDDEN HELPER



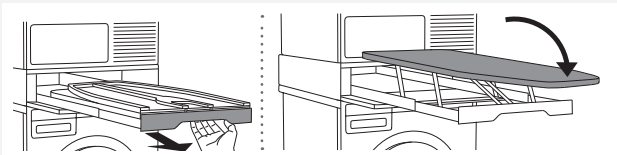
**1** Press on the hidden helper door to open it.



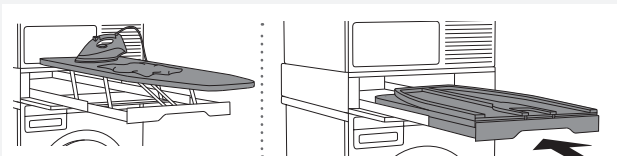
**2.1** Pull out the **basket** towards you as far as it will go. After use, push it back into the hidden helper.



**2.2** Pull out the shelf with the **basket** towards you as far as it will go. After use, push it back into the hidden helper.

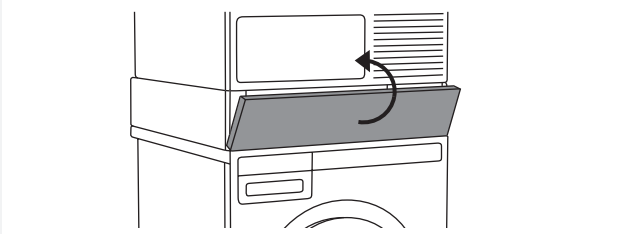


**2.3** Hold the **ironing board** handle, pull it out towards you as far as it will go, and unfold (open) it.



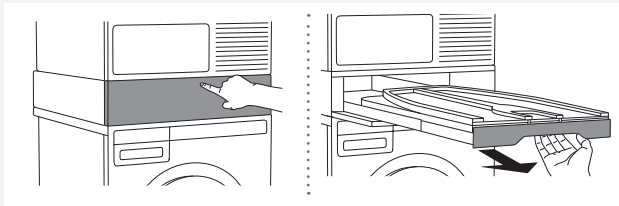
**2.3.1** The ironing board is ready for ironing.

After ironing, fold the ironing board and press it back inside the hidden helper.



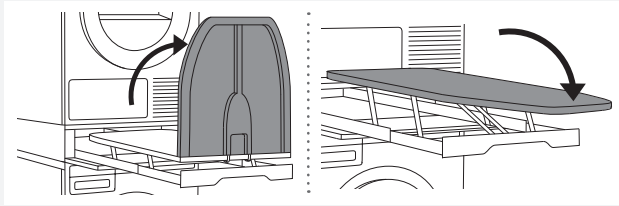
**3** Close the hidden helper door.

## ADJUSTING AND FIXING THE IRONING BOARD (BEFORE FIRST USE)

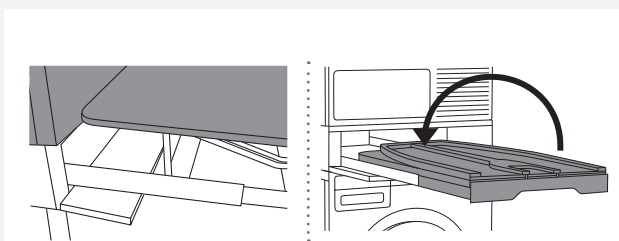


**1** Press on the hidden helper door to open it.

Hold the ironing board handle and pull it out towards you as far as it will go.

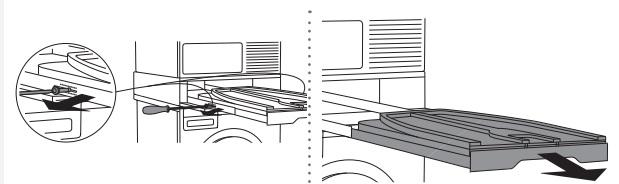


**2** Unfold (open) the ironing board in the direction indicated in the figure.

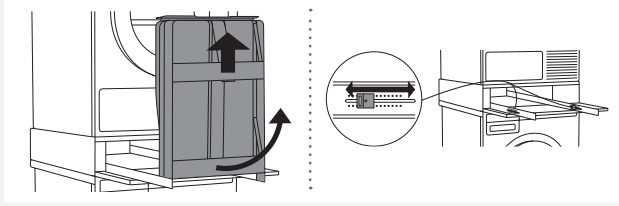


**3** Check for stability before using for the first time. When the ironing board is in the locked position, it is very important that its back part is pressed tightly against the dryer.

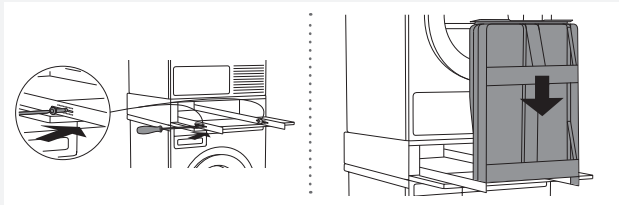
If the ironing board does not fit tightly, it can be adjusted as necessary. To do this, fold (close) the ironing board and follow steps 4, 5 and 6.



**4** Use a screwdriver to carefully undo the screws on the guides on both sides (as shown in the figure) and pull out the ironing board under a right angle (perpendicularly).

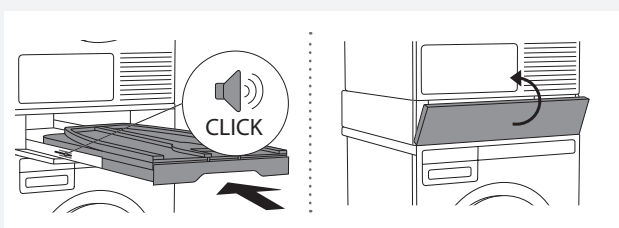


**5** Detach the ironing board from the guides in the perpendicular direction, and set the length of the plastic plug extension on both sides.



**6** Then, replace and tighten the screws removed in step 4.

Replace the ironing board (under a right angle).



**7** When replacing the board (under a right angle), it has to audibly "CLICK" into place. Then, push the ironing board towards the inside of the hidden helper.

Close the hidden helper door.