

SUPPLEMENTAL INSTRUCTIONS - FLUSH-MOUNTING OF WALL APPLIANCES

APPLIES TO MODELS:

WALL OVEN - KSO30/KDO30
WARMING DRAWER - KWD30
MICROWAVE OVEN - KMWC24

NOTICE There are two styles of flush-mounting your wall appliances (wall oven + warming drawer + microwave).

CABINET DEPTH AND CUTOUT DIMENSIONS ARE *DIFFERENT* DEPENDING ON WHICH STYLE YOU CHOOSE.

This supplement shows examples on the next pages with appropriate cutouts and dimensions. You must still follow the installation manuals that came with your appliances and mounting kits. All appliances shown in this supplement are mounted on 3/4" [2 cm] thick plywood platforms.

IMPORTANT - READ ALL INSTRUCTIONS BEFORE YOU BEGIN

THE INSTRUCTIONS HEREIN ARE A GUIDE FOR THE CABINET-MAKER AND/OR INSTALLER OF THE APPLIANCES. INSTALLATION OF THE APPLIANCES SHOULD BE PERFORMED BY A QUALIFIED SERVICE TECHNICIAN.

⚠ WARNING ELECTRICAL PARTS & COMPONENTS – DISCONNECT ALL POWER SUPPLIES BEFORE SERVICING. UNITS MUST BE UNPLUGGED FROM THE POWER OUTLET, OR THE ELECTRICAL BREAKER SHUT OFF. YOU WILL NEED TO MOVE THE APPLIANCES AWAY FROM THE WALL FOR ACCESS.

IN ALL CIRCUMSTANCES, FOLLOW THE INSTRUCTIONS PROVIDED WITH THE APPLIANCES AND KITS. THIS DOCUMENT IS ONLY A SUPPLEMENT.

MOUNTING STYLE A - STANDARD MOUNT WITH FLUSH FRONTS

This mounting style has all the appliance doors flush to each other (wall oven + warming drawer + microwave). The appliance doors **ARE NOT** inset into the cabinetry.

NOTICE STANDARD CABINETS ARE BUILT TO A DEPTH OF 24" (not including the face-frame, which is typically 3/4" thick). Follow the installation instructions for each appliance and kit for location of electrical supply / outlets.

The arrangement shown features the following products and kits:

Convection Microwave **KMWC24**

Microwave Built-In Kit **AKMWCK30**

Microwave Spacer Kit **AKMWSK**

Single Wall Oven **KSO30**

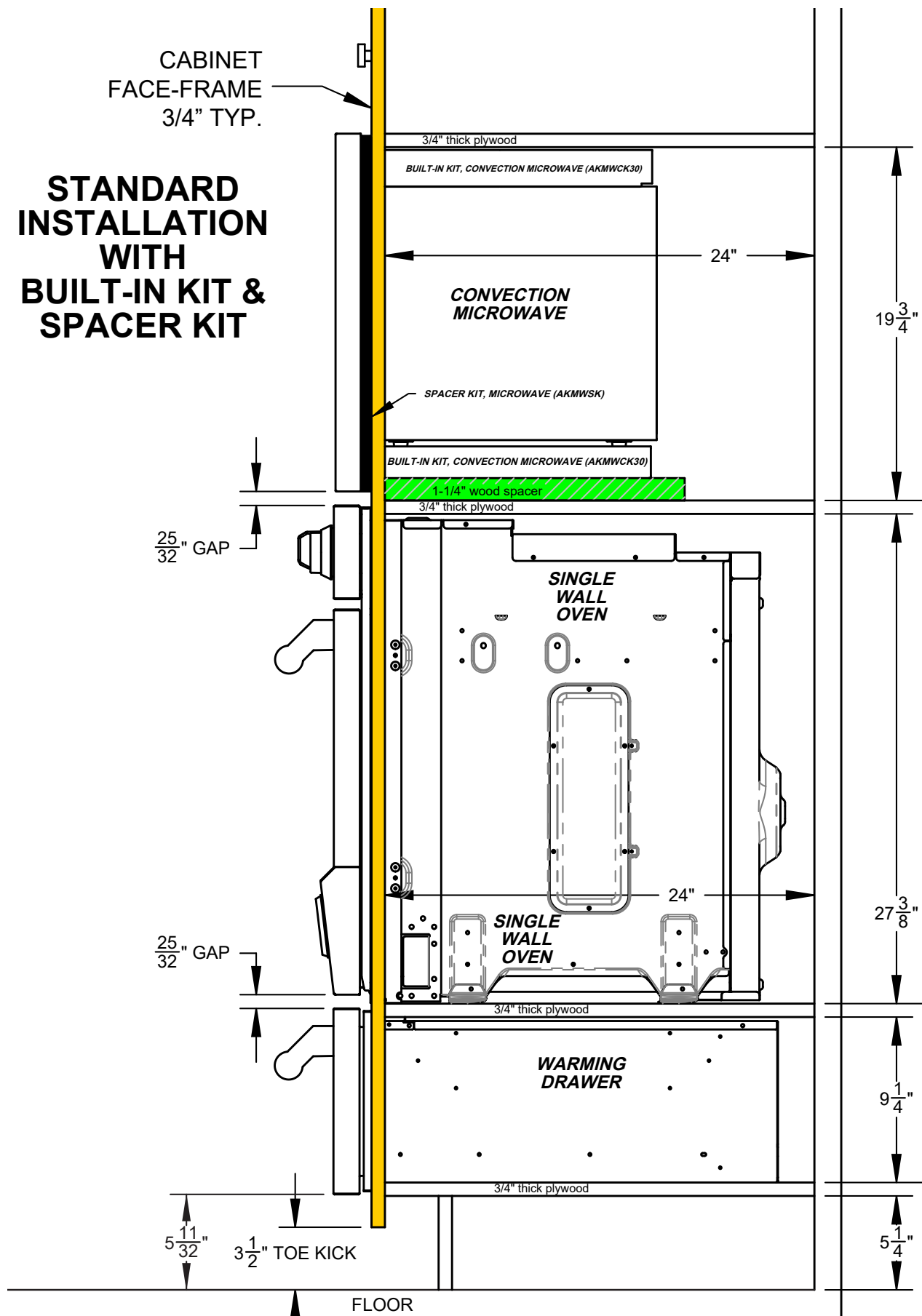
Warming Drawer **KWD30**

This arrangement will leave approximately 25/32" vertical gap between each appliance door face (see next page). Please note the use of a 1-1/4" wood spacer beneath the Microwave Built-In Kit.

MOUNTING STYLE A - STANDARD MOUNT WITH FLUSH FRONTS

EN

STANDARD INSTALLATION WITH BUILT-IN KIT & SPACER KIT



MOUNTING STYLE B - FLUSH (INSET) MOUNT

This mounting style has all the appliance doors flush to each other (wall oven + warming drawer + microwave) **AND** the appliance doors **ARE** inset into the cabinetry - allowing the appliance doors and face-frames to all be flush.

NOTICE THE CABINET **MUST** BE BUILT TO A **MINIMUM** DEPTH OF **24-1/2"** (not including the face-frame, which is typically 3/4" thick). Follow the installation instructions for each appliance and kit for location of electrical supply / outlets.

The arrangement shown features the following products and kits:

Convection Microwave **KMWC24**

Microwave Built-In Kit **AKMWCK30**

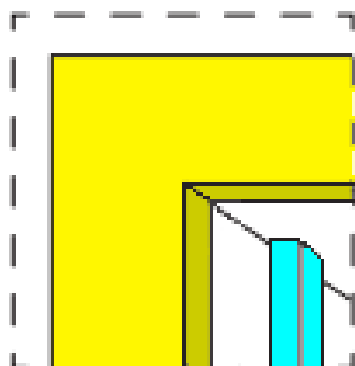
Microwave Flush-Mount Kit **AKMWFK**

Single Wall Oven **KSO30**

Warming Drawer **KWD30**

This arrangement will leave different vertical gaps between each appliance door face due to the ventilation requirements for each appliance. Please note the use of a 1-3/4" wood spacer beneath the Microwave Built-In Kit, **AND** a 25/32" wood spacer beneath the Warming Drawer. These spacers are needed for proper vertical placement of each item.

There are also several side mounting strips which must be located as shown and denoted with an asterisk *.

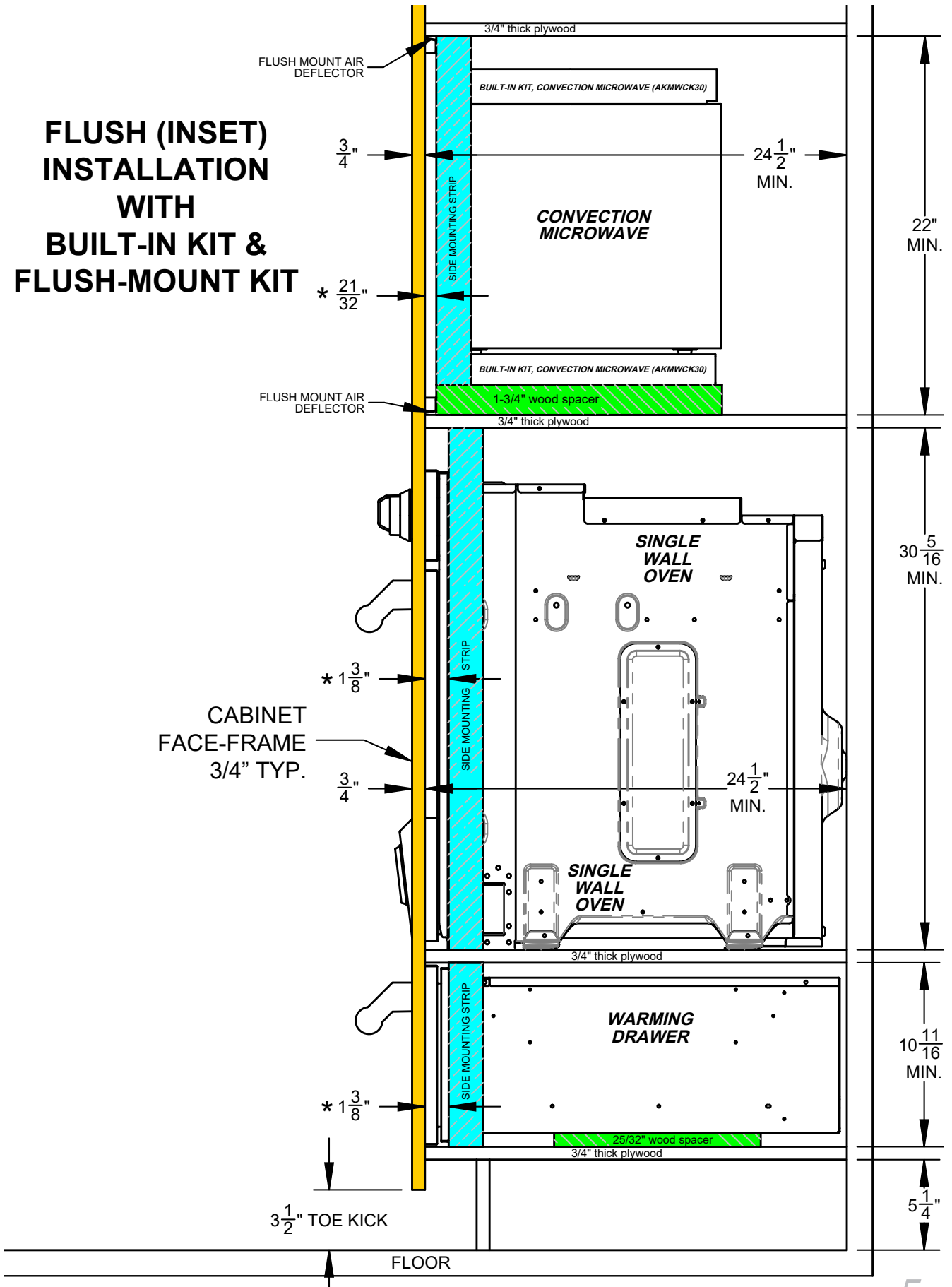


DETAIL OF SIDE
MOUNTING STRIP

MOUNTING STYLE B - FLUSH (INSET) MOUNT

EN

FLUSH (INSET) INSTALLATION WITH BUILT-IN KIT & FLUSH-MOUNT KIT



MOUNTING STYLE A - STANDARD MOUNT WITH FLUSH FRONTS

This mounting style has both appliance doors flush to each other (double wall oven + warming drawer). The appliance doors **ARE NOT** inset into the cabinetry.

NOTICE

STANDARD CABINETS ARE BUILT TO A DEPTH OF 24" (not including the face-frame, which is typically 3/4" thick). Follow the installation instructions for each appliance and kit for location of electrical supply / outlets.

EN

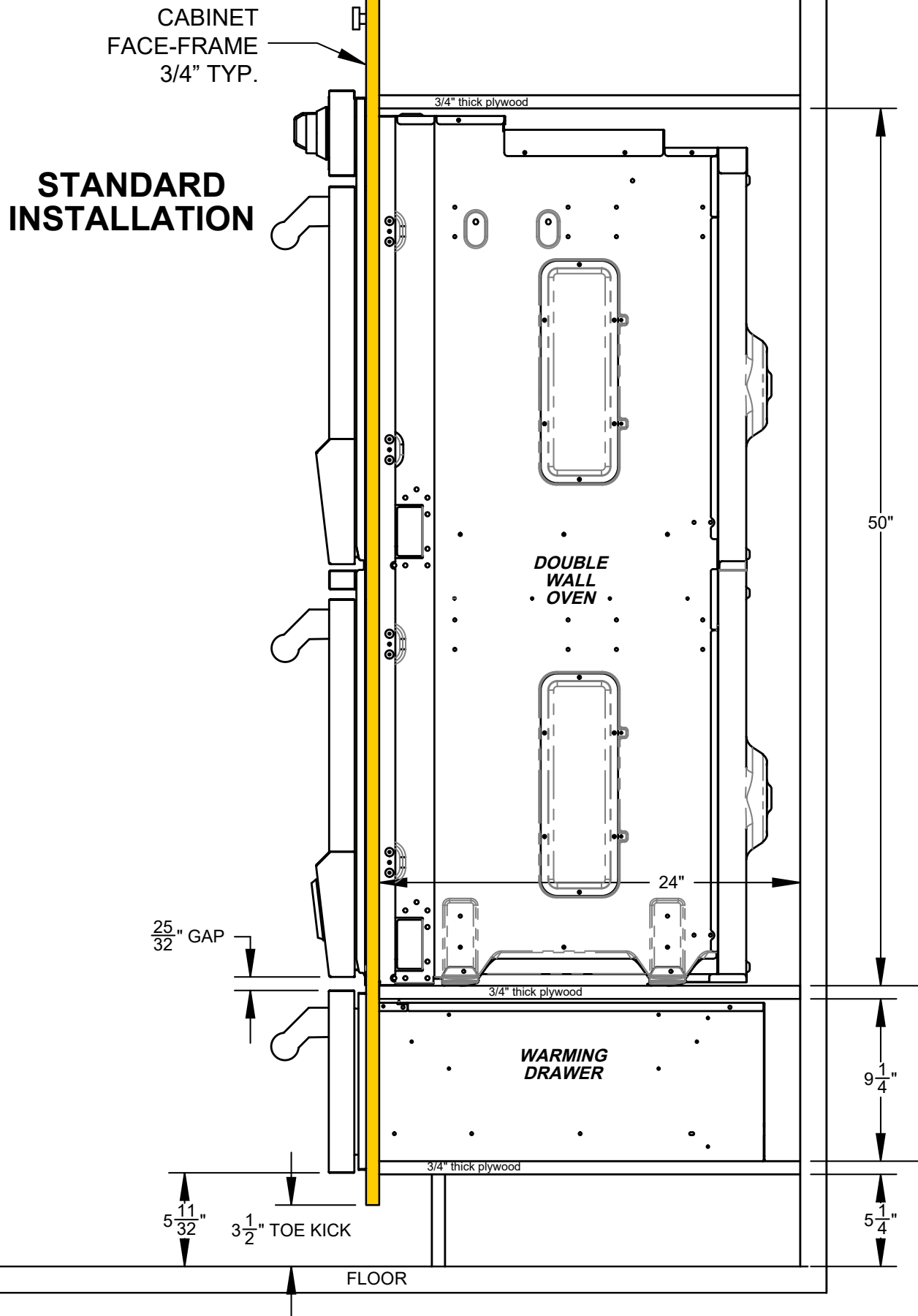
The arrangement shown features the following products:

Double Wall Oven **KDO30**

Warming Drawer **KWD30**

This arrangement will leave approximately 25/32" vertical gap between each appliance door face (see next page).

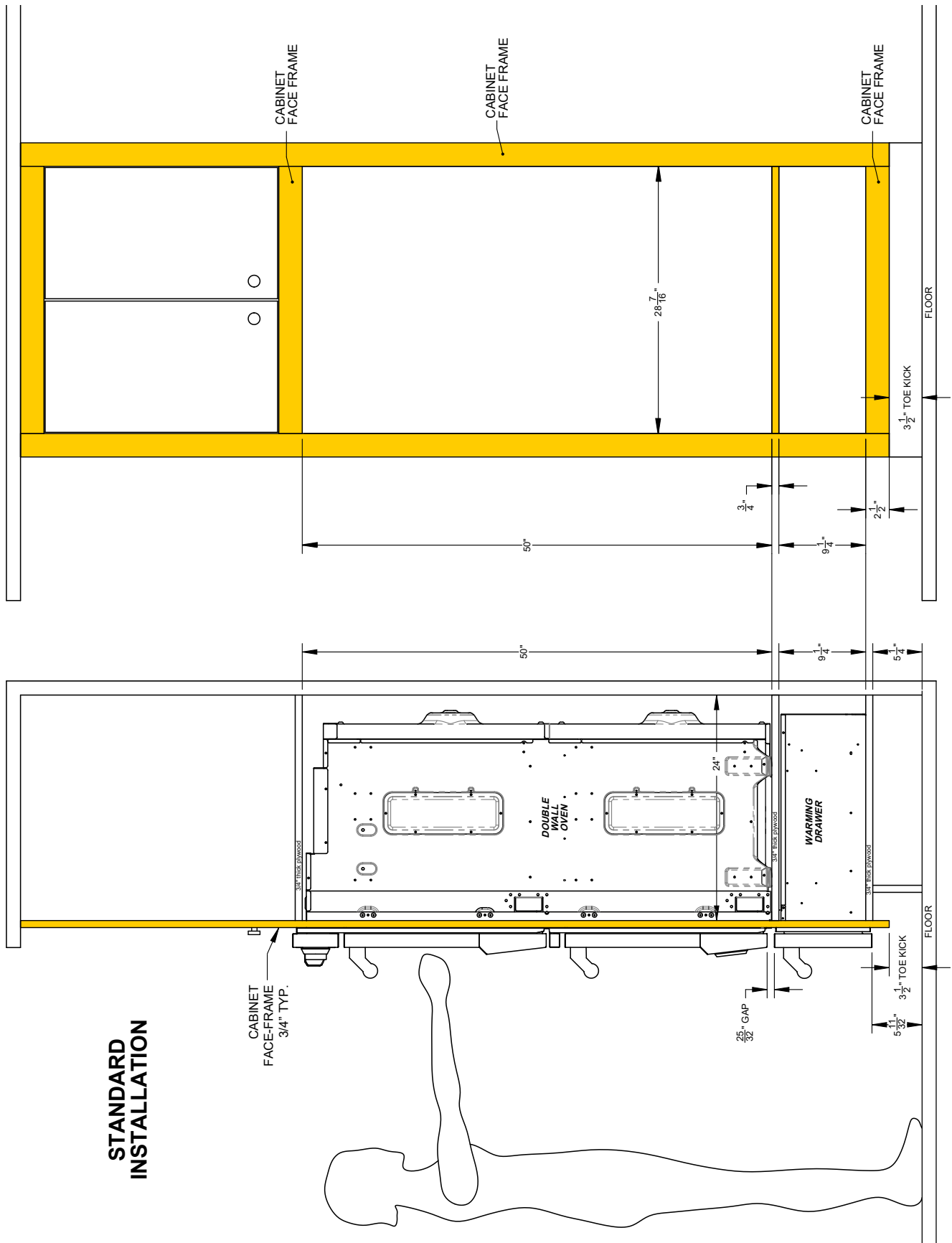
MOUNTING STYLE A - STANDARD MOUNT WITH FLUSH FRONTS



EN

MOUNTING STYLE A - STANDARD MOUNT WITH FLUSH FRONTS

EN



STANDARD INSTALLATION

MOUNTING STYLE B - FLUSH (INSET) MOUNT

This mounting style has both appliance doors flush to each other (wall oven + warming drawer) **AND** the appliance doors **ARE** inset into the cabinetry, allowing the appliance doors and face-frames to all be flush.

EN

NOTICE THE CABINET **MUST** BE BUILT TO A **MINIMUM** DEPTH OF **24-1/2"** (not including the face-frame, which is typically 3/4" thick). Follow the installation instructions for each appliance and kit for location of electrical supply / outlets.

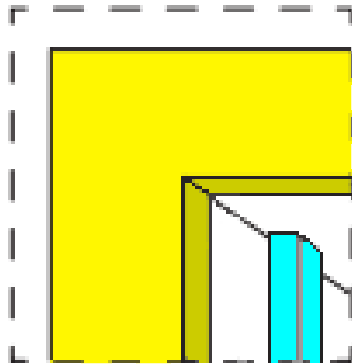
The arrangement shown features the following products:

Double Wall Oven **KDO30**

Warming Drawer **KWD30**

Please note the use of a 25/32" wood spacer beneath the Warming Drawer. This spacer is needed for proper vertical placement.

There are also side mounting strips which must be located as shown and denoted with an asterisk *.

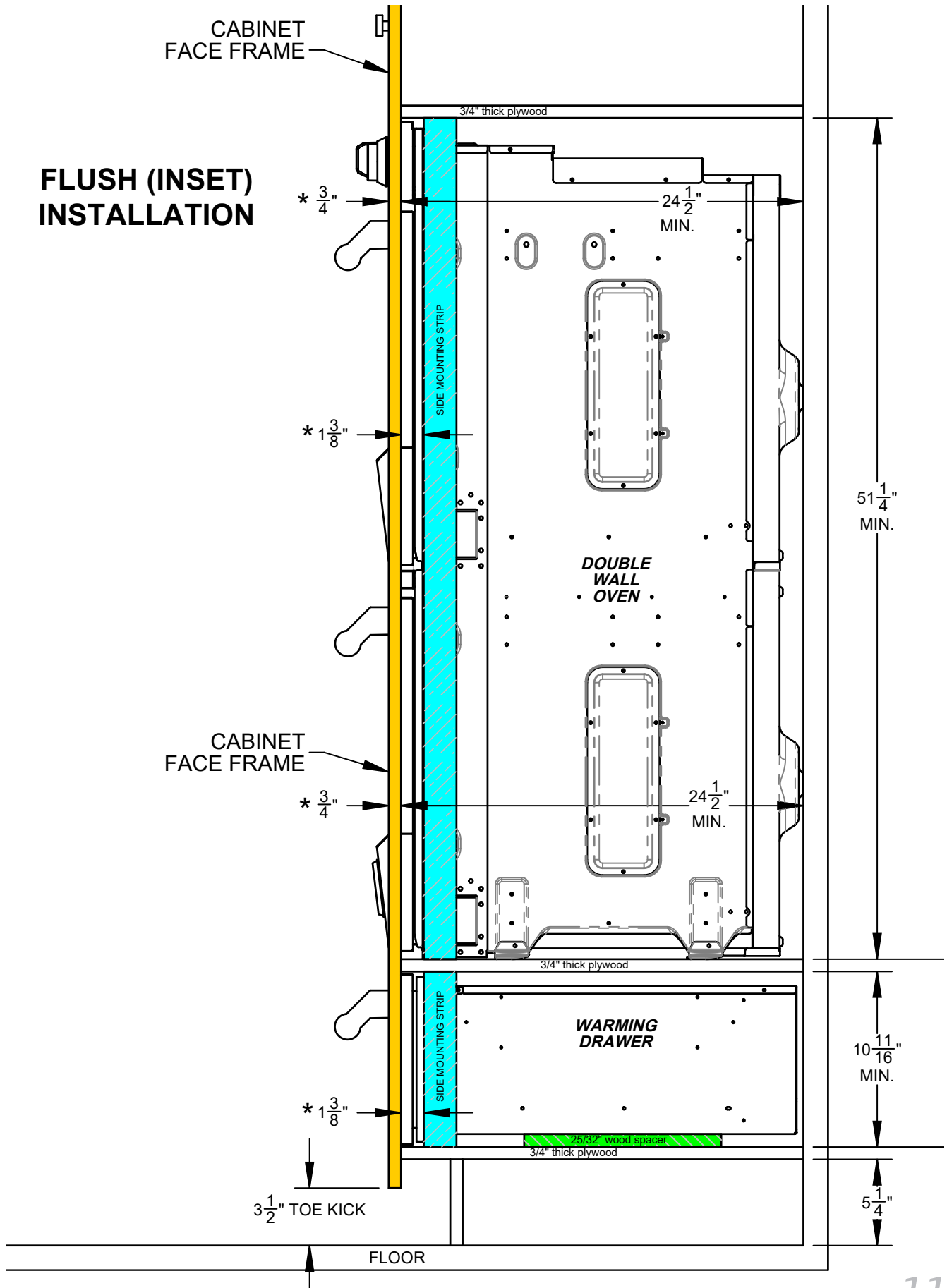


DETAIL OF SIDE
MOUNTING STRIP

MOUNTING STYLE B - FLUSH (INSET) MOUNT

EN

FLUSH (INSET) INSTALLATION



MOUNTING STYLE B - FLUSH (INSET) MOUNT

EN

