

MAST304QBXT

MASTER SERIES

30" DROP-IN GAS COOKTOP 4 BRASS BURNERS



Bring Italian design and precision into your kitchen with the Bertazzoni signature low edge drop-in cooktop, designed to install almost flush with the countertop.

Cook like a pro on the 4 brass burners and cast iron contour grates, spaciouly laid out to accommodate pots of different sizes.

Crank up the heat to boil water, sear meat or cook with a wok using the power burner with dual ring flame, which boils water faster than any burner in its class (19,000 BTUs with LP gas).

Delicately melt chocolate on the simmer burner.

Protect your house and your family with the 100% fail-safe thermocouple technology that immediately shuts off the flow of gas in case of a flame outage.

Clean in no time after cooking, thanks to the seamless one-piece stainless worktop with no gaps, joints or fasteners.

Designed and manufactured with pride by Bertazzoni in Italy.

Industry leading 2 years parts and labor warranty.

PRODUCT FEATURES

Maintop	4 burners
Burner power	1 power burner 17000 BTU 1 rapid burner 10400 BTU 1 medium burner 6000 BTU 1 simmer burner 3750 BTU
Ignition system	Electric with thermocouple safety device
Grates	Cast iron
Included accessories	Wok ring Simmer ring

TECHNICAL SPECIFICATIONS

Electrical supply	120 V 60 HZ - 1 W 1 Amps
Power connection	NEMA 5-15P with 59" power cord
Certification	UL
Warranty	2 years parts & labor
Gas type	NG
Conversion kit included	LPG
Packaging dimensions and weight	W 34 1/2" H 8 1/4" D 26" 66.0 lbs

MAST304QBXT

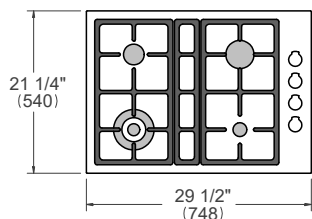
MASTER SERIES

30" DROP-IN GAS COOKTOP 4 BRASS BURNERS

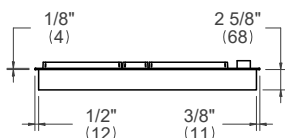


PRODUCT DIMENSIONS

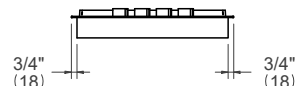
TOP VIEW



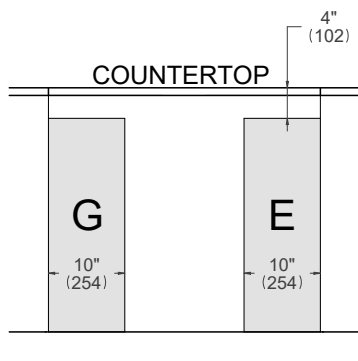
FRONT VIEW



SIDE VIEW



ELECTRICAL & GAS CONNECTION



E

A properly-grounded, horizontally-mounted electrical receptacle should be installed according to this drawing.

G

An agency-approved, properly-sized manual shut-off valve should be installed according to this drawing.

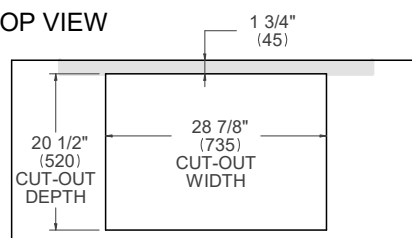
INSTALLATION REQUIREMENTS

Combustible material cannot be installed within shaded area.

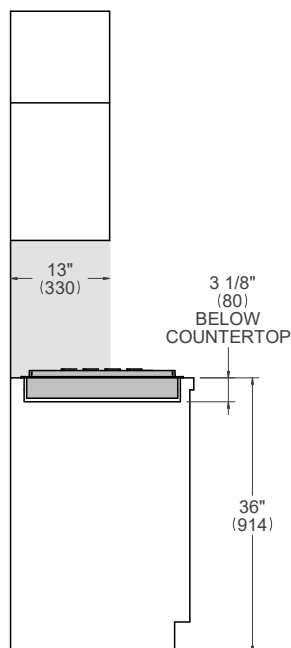
For installation with an updraft or downdraft hood as well as any OTR, refer to the hood/OTR manufacturer's installation requirements.

CUTOUT DIMENSIONS

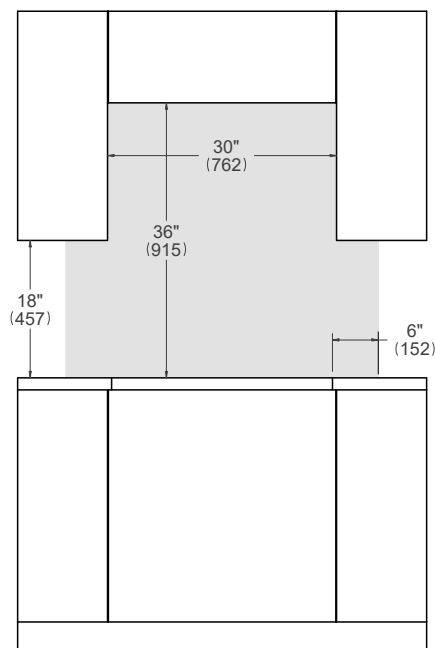
TOP VIEW



SIDE VIEW



FRONT VIEW



For installation of multiple products in combination, refer to the Design Guide at us.bertazzoni.com or ca.bertazzoni.com

Disclaimer: while every effort has been made to ensure the accuracy of the information contained in this document, Fratelli Bertazzoni reserves the right to change it at any time without notice. For detailed installation instructions, consult the installation manual. Fratelli Bertazzoni, Bertazzoni and the winged wheel brand icon are registered trademarks of Bertazzoni Spa.