



## User's Guide

Guía del Usuario - Guide de l'utilisateur



Model: **RA-2115**  
**11.5 CU FT Refrigerator**

# TABLE OF CONTENTS

---

IMPORTANT SAFETY INSTRUCTIONS . . . . .	3
INSTALLING YOUR NEW APPLIANCE . . . . .	5
UNIT DIAGRAM . . . . .	10
CONTROL PANEL . . . . .	11
USING YOUR NEW APPLIANCE . . . . .	12
CLEANING AND CARE . . . . .	13
PROPER STORAGE OF FOOD . . . . .	14
HELPFUL HINTS AND TIPS. . . . .	16
TROUBLESHOOTING . . . . .	18
DISPOSAL OF THE APPLIANCE . . . . .	19
CUSTOMER SUPPORT . . . . .	20
ONE-YEAR LIMITED APPLIANCE WARRANTY (US) . . . . .	21
NOTES . . . . .	22

# IMPORTANT SAFETY INSTRUCTIONS

---

## **PLEASE SAVE THESE INSTRUCTIONS. YOU MAY NEED THEM IN THE FUTURE.**

1. This refrigerator must be properly installed and located in accordance with the installation instructions in this guide before it is used.
2. Do not allow children to climb, stand or hang on the shelves in the refrigerator. They could damage the refrigerator and seriously injure themselves.
3. Do not store or use gasoline or other flammable vapors and liquids in the vicinity of this or any other appliance.
4. Keep fingers out of the space between the doors and cabinet. Be careful closing doors when children are in the area.
5. Unplug the refrigerator before cleaning and making repairs.
6. We strongly recommend that any servicing be performed by a qualified individual.
7. Do not leave the refrigerator in extremely cold or warm temperatures.
8. Do not place the refrigerator near heat sources or open flames.
9. Clean the refrigerator with a soft, damp cloth. Remove stains with a mild soap. Do not clean the unit with industrial-grade solvents, or abrasive chemicals.
10. Do not place heavy items on top of the refrigerator.
11. Never install the refrigerator where there is a lot of moisture or in areas where water can splash.
12. Do not allow children to hang on the doors; the refrigerator may be tip over and hurt children.
13. Never eat food that may have spoiled because it was stored too long in the refrigerator or was stored in an out-of-order refrigerator.
14. Do not use sharp tools inside the refrigerator (such as an ice pick to remove ice) as damage may occur.
15. When not using it for a long period of time, remove all food from the refrigerator and unplug the unit.
16. Before connecting the unit to the power source, let it stand upright for approximately 24 hours. This will reduce the possibility of a malfunction in the cooling system due to any handling during shipment.

## **BEFORE DISCARDING YOUR OLD REFRIGERATOR**

### **REFRIGERANT**

The refrigerant isobutene (R600a) is contained within the refrigerant circuit of the appliance, a natural gas with a high level of environmental compatibility, which is nevertheless flammable. During transportation and installation of the appliance, ensure that none of the components of the refrigerant circuit becomes damaged.

**The refrigerant (R600a) is flammable.**

**WARNING** — Refrigerators contain refrigerant and gasses in the insulation. Refrigerant and gasses must be disposed of professionally as they may cause eye injuries or ignition. Ensure that tubing of the refrigerant circuit is not damaged prior to proper disposal.

It is hazardous for anyone other than an Authorized Service Person to service this appliance. In Queensland the Authorized Service Person Must hold a GasWork Authorized for hydrocarbon refrigerants to carry out servicing or repair which involve removal of covers.

## **CHILD ENTRAPMENT WARNING**

Risk of child entrapment. Before you throw away your old refrigerator or freezer:

1. Take off the doors.
2. Leave the shelves in place, so that children cannot easily climb inside.

## **DO NOT USE AN EXTENSION CORD WITH THIS APPLIANCE**

*For Household Use Only ----- Save These Instructions*

***WARNING! CALIFORNIA RESIDENTS  
Cancer and Reproductive Harm  
[www.P65Warnings.ca.gov](http://www.P65Warnings.ca.gov)***

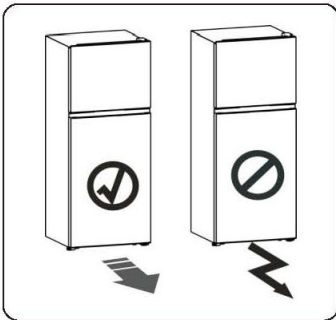
# INSTALLING YOUR NEW APPLIANCE

Before using the appliance for the first time, you should be informed of the following tips.

## Warning!

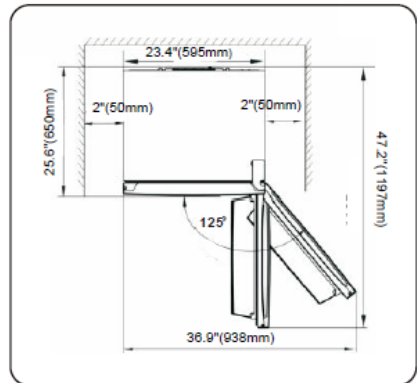
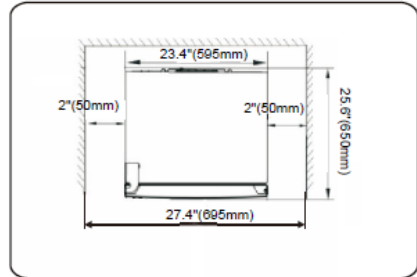
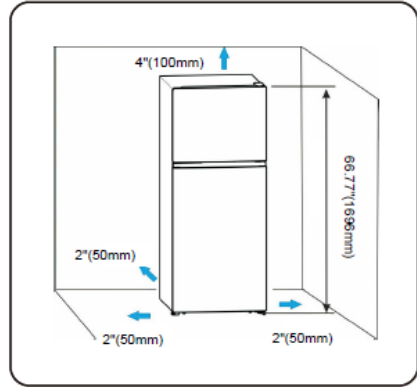
For proper installation, this refrigerator must be placed on a level surface of hard material that is the same height as the rest of the flooring. This surface should be strong enough to support a fully loaded refrigerator.

The rollers, which are not castors, should be only used for forward or backward movement. Moving the refrigerator sideways may damage your floor and the rollers.



## Ventilation of appliance

In order to improve efficiency of the cooling system and save energy, it is necessary to maintain good ventilation around the appliance for the dissipation of heat. For this reason, sufficient clear space should be available around the refrigerator. Suggest: It is advisable for there to be 50mm of space from the back to the wall, at least 100mm from its top, at least 50mm from its side to the wall and a clear space in front to allow the doors to open 125°. As shown in follow diagrams.



**Note:** This appliance performs well within the climate class from SN to T showed in the table below. It may not work properly if being left at a temperature above or below the indicated range for a long period.

Climate class	Ambient temperature
SN	+10°C to +32°C
N	+16°C to +32°C
ST	+16°C to +38°C
T	+16°C to +43°C

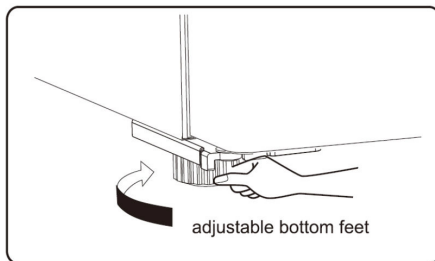
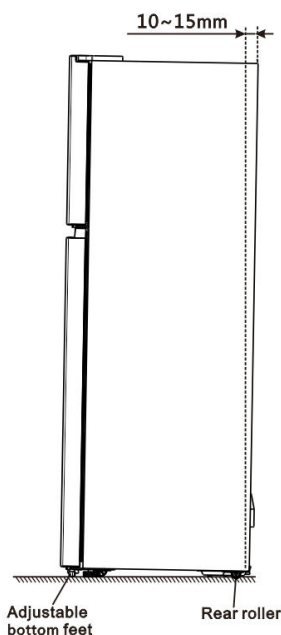
Stand your appliance in a dry place to avoid high moisture.

Keep the appliance out of direct sunlight, rain or frost. Stand the appliance away from heat sources such as stoves, fires or heaters.

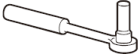




## Leveling of appliance

For sufficient leveling and air circulating in the lower rear section of the appliance, the bottom feet may need to be adjusted. You can adjust them manually by hand or by using a suitable spanner.

To allow the doors to self-close, tilt the top backwards by 10-15mm.



## Tools you will need

		
8mm socket wrench	Cross-shaped screwdriver	
		
Thin-blade screwdriver	Monkey wrench	8mm wrench

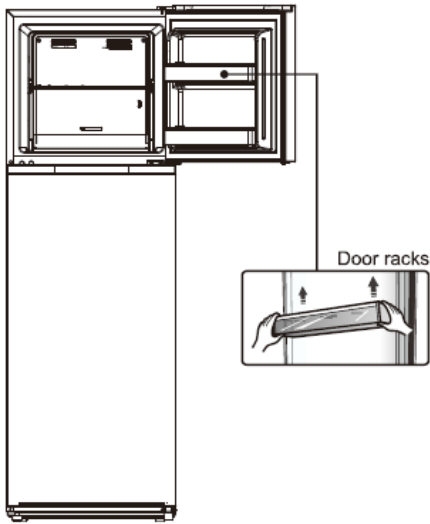
**Note:** Before you start lay the refrigerator on its back in order to gain access to the base, you should rest it on soft foam packaging or similar material to avoid damaging the backboard of the refrigerator.

## Reversing the door

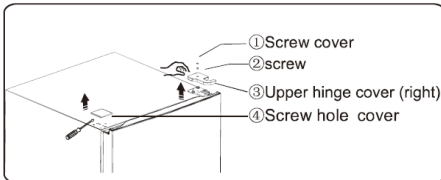
The side at which the door opens can be changed, from the right side (as supplied) to the left side, if the installation site requires.

**Warning!** When reversing the door, the appliance must not be connected to the mains. Ensure that the plug is removed from the mains socket.

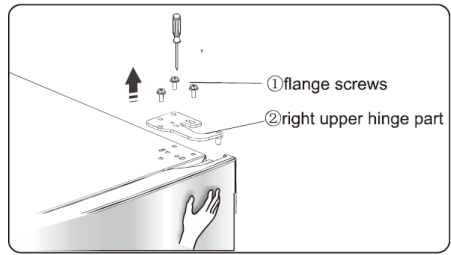
1. Stand the refrigerator upright. Open the upper door to take out all door racks (to avoid damaged) and then close the door.



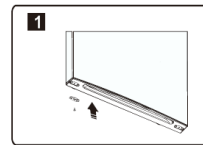
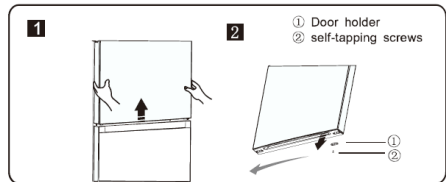
2. Stand the refrigerator upright, first remove the screw cover ① and loose the screw ② and unscrew the upper hinge cover ③ which is at the top right corner of the refrigerator, and use a putty knife or thin-blade screwdriver to prize the screw hole cover ④ which is at the top left corner of the refrigerator.



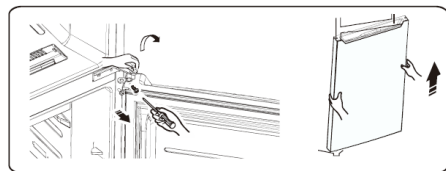
3. Unscrew the flange screws ① which are used for fixing the right upper hinge part ②. Lift the upper door and place it on a padded surface to prevent it from scratching. **Note:** Please hold the upper door by hand during step 3 to prevent door dropping.



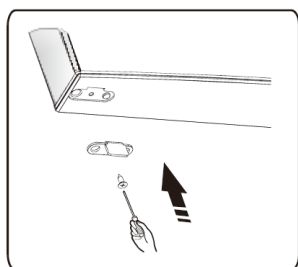
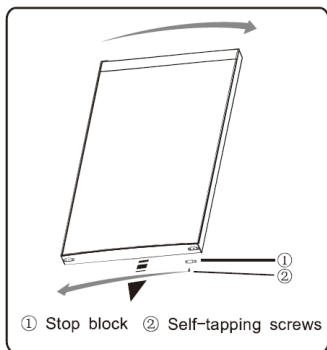
4. Remove the upper door and place it on a smooth surface with its panel upwards. Loose screws ②, detach part ①, then install part ① to the left side with screws ②.



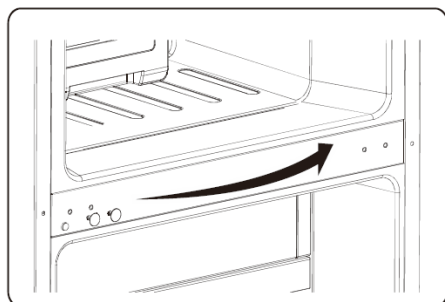
5. Loose screws used to fix the middle hinge and remove middle hinge. Then remove the lower door.



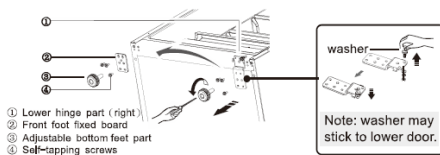
6. Place the lower door on a smooth surface with its panel upwards. Loose screws ②, detach part ①. Then install part ① to corresponding position on left side together with screws ②.



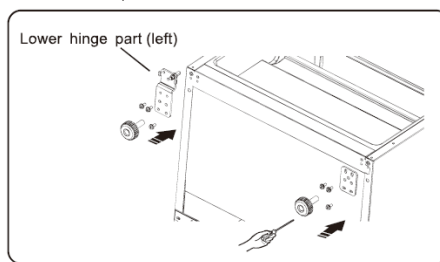
7. Change screw hole covers on middle cover plate from left to right (as shown in figure below).



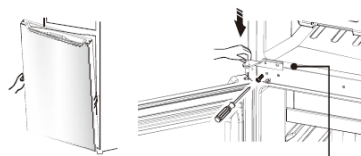
8. Place refrigerator flatwise, remove part ③ and then loose screws ④. Remove part ② and part ①.



9. Screw out over hinge, change it to the near hole site, and then screw up and mount washer.
10. Just remount to the step 8, change part ① to left and part ② to right and then fix them with screws ④. Finally install part ③.

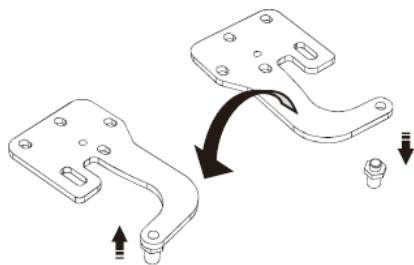


11. Move the lower door and adjust its position to align lower hole site and upper hinge axis. Turn the middle hinge by 180, change the washer on the axis to the upper side, adjust the middle hinge to the appropriate position and then install it.

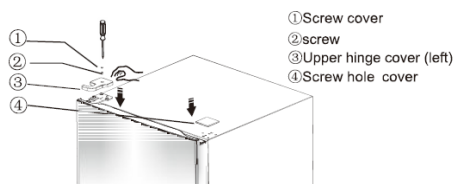


12. Screw out the upper hinge axis, turn the upper hinge over and fix axis on it. Then place it at side for use.



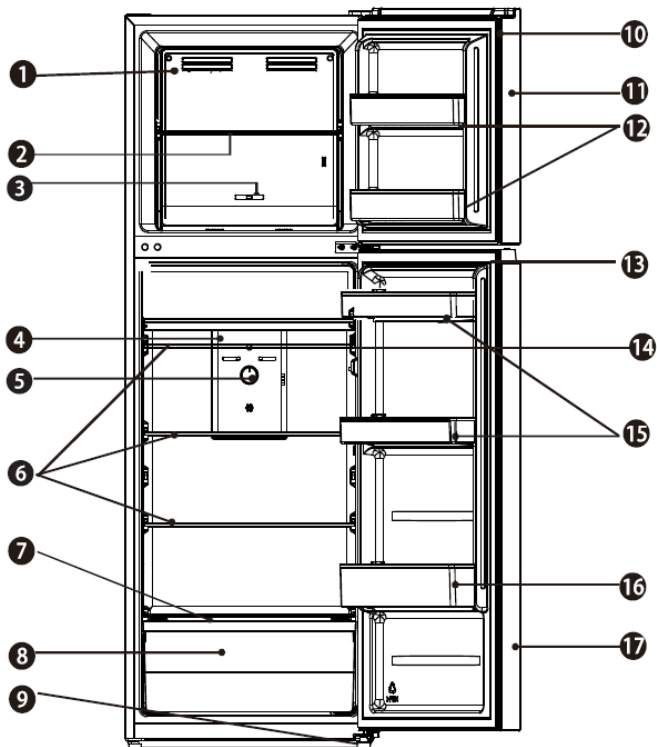


13. Just remount to the step 2, change upper hinge cover ③ to left and fix them with screw ② and then install the screw cover ①. Finally, change screw hole cover ④ to right.



14. Open the upper door, mount door racks and then close it.

## UNIT DIAGRAM



- |                           |                         |
|---------------------------|-------------------------|
| 1. Freezer wind channel   | 10. Freezer door gasket |
| 2. Freezer shelf          | 11. Freezer door        |
| 3. Freezer temp. control  | 12. Freezer door rack   |
| 4. Fridge wind channel    | 13. Fridge door gasket  |
| 5. Fridge temp. control   | 14. Door switch         |
| 6. Fridge shelf           | 15. Upper door rack     |
| 7. Crisper cover          | 16. Lower door rack     |
| 8. Crisper                | 17. Fridge door         |
| 9. Adjustable bottom feet |                         |

**Note!** Due to unceasing modification of our products, your refrigerator may be slightly different from this instruction manual, but its functions and using methods remain the same.

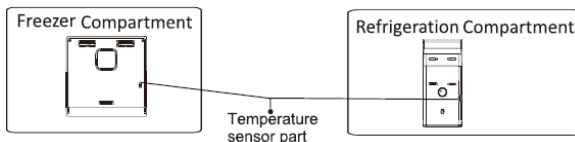
**Note!** To get the best energy efficiency of this product, please place all shelves, drawers and baskets in their original position as the illustration above.

# CONTROL PANEL

Please read the temperature regulation method carefully before use, and the compartment temperature of the fridge can be adjusted through the control panel. For normal use of the fridge, set the regulator to the middle position if required, see the following method.

Temperature Setting Recommendation		
Condition	Freezer compartment	Refrigeration compartment
Summer (Higher than 32°C)	<p>Set on 2~5 (set on the middle position when you make the ice)</p>	<p>cold 1 2 3 4 5 6 7 colder</p> <p>Set on 5~6</p>
Normal	<p>Set on the middle position</p>	<p>cold 1 2 3 4 5 6 7 colder</p> <p>Set on the middle position</p>
Winter (Under 12°C)	<p>Set on 8~9</p>	<p>cold 1 2 3 4 5 6 7 colder</p> <p>Set on 6~7</p>
Unrecommended settings		
Compartment	Setting	Effect
Freezer		It may cause the freezer compartment temperature increases.
Freezer		It may cause the refrigeration compartment temperature increases.
Refrigeration	<p>cold 1 2 3 4 5 6 7 colder</p> <p>Set on 1~2</p>	It may cause the freezer compartment temperature increases.
Refrigeration	<p>cold 1 2 3 4 5 6 7 colder</p> <p>Set on 7</p>	It may lead to the more energy consumption.

**Important:** Don't place too much food directly against the air outlet of the temperature sensor part in Wind channel cover of the refrigerator compartment, as it affects that appliance can't operate correctly.



## USING YOUR NEW APPLIANCE

Your appliance has the accessories as the “Description of the appliance” showed in general, with this part of instruction you can have the right way to use them. We recommend that you read through them carefully before using the appliance

### Door rack

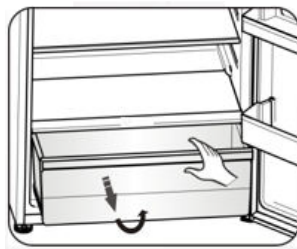
- It is suitable for the storage of eggs, canned liquid, bottled drinks and packed food, etc. Do not place too many heavy things in the racks.
- Small rack on lower door can be placed at different heights according to your requirements. Please take food out of the shelf before lifting vertically to reposition.

### Shelf in Refrigerator chamber

1. There are shelves in refrigerator chamber, and they can be taken out to be cleaned.



2. The crisper is suitable for storage of vegetables and fruit, etc.



### Freezer chamber

The freezer chamber is suitable for storage of foods required to be frozen, such as meat, ice.

**Caution!** Do not close refrigerator door when installing deep bracket, It may damage the unit.

Ensure that drink bottles are not left in the freezer for a longer time than needed as freezing liquid may cause the bottle to break.

## CLEANING AND CARE

For hygienic reasons the appliance (including exterior and interior accessories) should be cleaned regularly (at least every two months).

### Warning!

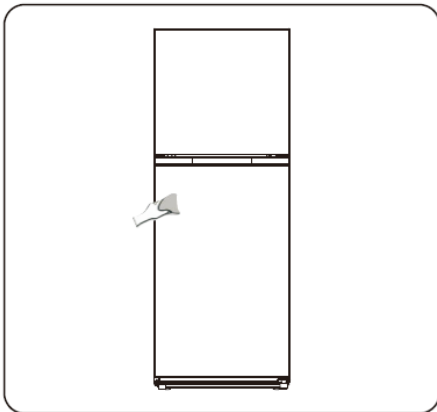
The appliance must not be connected to the mains during cleaning as there is a danger of electrical shock! Before cleaning, switch the appliance off and remove the plug from the mains socket.

### Exterior cleaning

Wipe the control panel with a clean, soft cloth.

Spray water onto the cleaning cloth instead of spraying directly on the surface of the appliance. This helps ensure an even distribution of moisture to the surface.

Clean the doors, handles and cabinet surfaces with a mild detergent and then wiped dry with a soft cloth.



### Caution!

Don't use sharp objects as they are likely

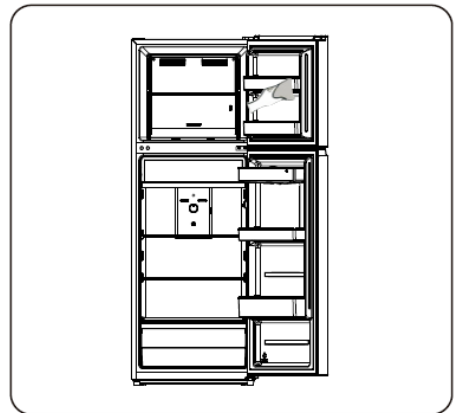
to scratch the surface.

Don't use Thinner, Car detergent, Clorox, ethereal oil, abrasive cleansers or organic solvent such as Benzene for cleaning. They may damage the surface of the appliance and may cause fire.

### Interior cleaning

You should clean the appliance interior regularly. It will be easier to clean when food stocks are low. Wipe the inside of the fridge freezer with a weak solution of bicarbonate of soda, and then rinse with warm water using a wrung-out sponge or cloth. Wipe completely dry before replacing the shelves and baskets.

Thoroughly dry all surfaces and removable parts before putting them back into place.



Although this appliance automatically defrosts, a layer of frost may occur on the freezer compartment's interior walls if the freezer door is opened frequently or kept open too long. If the frost is too thick, choose a time when the freezer is nearly empty and proceed as follow:

1. Remove existing food and accessories baskets, unplug the appliance from the mains power and leave the doors open. Ventilate the room thoroughly to accelerate the process.
2. When defrosting is completed, clean your freezer as described above.

Caution!

Do not use sharp objects to remove frost from the freezer compartment. Only after the interior is completely dry should the appliance be switched back on and plugged back into the mains socket.

## Door seals cleaning

Take care to keep door seals clean. Sticky food and drinks can cause seals to stick to the cabinet and tear when you open the door. Wash seal with a mild detergent and warm water. Rinse and dry it thoroughly after cleaning.

## PROPER STORAGE OF FOOD

---

To avoid contamination of food, please following these instructions:

- Leaving the fridge door open or ajar for long periods will allow cold air to escape and warm compartments and endanger food with spoilage.
- Regularly clean surfaces that can come in contact with food and drainage.
- Store raw meat and fish in suitable containers in the refrigerator, so that it is not in contact with or drip onto other foods.
- Two-star frozen-food compartments are suitable for storing pre-frozen food, storing or making ice cream and making ice cubes.
- One-, two- and three- star

Caution! Only after the door seals are completely dry should the appliance be powered on.

## Replacing the LED light:

**Warning:** The LED light should be replaced by a competent person. If the LED light is damaged, contact the customer helpline for assistance. To replace the LED light, the below steps can be followed:

1. Unplug your appliance.
2. Remove light cover by pushing up and out.
3. Hold the LED cover with one hand and pull it with the other hand while pressing the connector latch.
4. Replace LED light and snap it correctly in place.
5. Install the light cover.

compartments are not suitable for the freezing of fresh food.

- Refer to the following table appropriate food storage within appliance.

	<b>Compartment TYPE</b>	<b>Target storage temp [°C]</b>	<b>Appropriate food</b>
1	Fridge	+2~+8	Eggs, cooked food, packaged food, fruits and vegetables, dairy products, cakes, Drinks and other foods which are not suitable for freezing.
2	(***)*-Freezer	≤ -18	Seafood (fish, shrimp, shellfish), freshwater aquatic products and meat products (recommended time is 3 months – nutrition values and taste decrease with time), suitable for frozen fresh food.
3	***-Freezer	≤-18	Seafood(fish, shrimp, shellfish), freshwater aquatic products and meat products (recommended time is 3 months – nutrition values and taste decrease with time). Not suitable for freezing fresh food.
4	** -Freezer	≤-12	Seafood (fish, shrimp, shellfish), freshwater aquatic products and meat products(recommended time is 2 months – nutrition values and taste decrease with time). Not suitable for freezing fresh food.
5	*-Freezer	≤-6	Seafood (fish, shrimp, shellfish), freshwater aquatic products and meat products (recommended time is 1 month – nutrition values and taste decrease with time). Not suitable for freezing fresh food.
6	0-star	-6~0	Fresh pork, beef, fish, chicken, some packaged processed foods, etc. (Recommended to eat within the same day, preferably not later than 3 days).
7	Chill	-2~+3	Fresh/frozen pork, beef, fish, chicken, freshwater aquatic products, etc. (7 days below 0°C and above 0°C is recommended for consumption within that day, preferably no more than 2 days). Seafood (less than 0 for 15 days, it is not recommended to store above 0°C).
8	Fresh Food	0~+4	Fresh pork, beef, fish, chicken, cooked food, etc. (Recommended to eat within the same day, preferably no more than 3 days).
9	Wine	+5~+20	Red wine, white wine, sparkling wine etc.

## HELPFUL HINTS AND TIPS

### Energy saving tips

We recommend that you follow the tips below to save energy.

Try to avoid keeping the door open for long periods in order to conserve energy.

Ensure the appliance is away from any sources of heat (direct sunlight, electric oven or cooker etc.) Don't set the temperature colder than necessary.

Don't store warm food or evaporating liquid in the appliance.

Place the appliance in a well ventilated, humidity free, room. Please refer to installing your new appliance chapter.

The diagram shows the correct positions for the drawers, crisper and shelves, do not adjust the combination as this is designed to be the most energy efficient configuration.

### Hints for fresh food refrigeration

Do not place hot food directly into the refrigerator or freezer, the internal temperature will increase resulting in the compressor having to work harder and will consume more energy.

Cover or wrap food, especially ones with strong odors.

Place food properly so that air can circulate freely around it.

### Hints for refrigeration

Meat (All Types) Wrap in polythene food: wrap and place on the glass shelf above the vegetable drawer. Always follow food storage times and use dates suggested by manufacturers.

Cooked food, cold dishes, etc.: They should be covered and may be placed on any shelf.

Fruit and vegetables: They should be stored in the special drawer provided.

Butter and cheese: Should be wrapped in airtight foil or plastic film wrap.

Milk bottles: Should have a lid and be stored on the door racks.

### Hints for freezing

When first starting-up or after a period out of use, let the appliance run at least 2 hours on the higher settings before putting food in the compartment.

Prepare food in small portions to enable it to be rapidly and completely frozen and to make it possible to subsequently thaw only the quantity required.

Wrap up the food in aluminum foil or polyethylene food wraps which are airtight. Do not allow fresh, unfrozen food to touch the food which is already frozen to avoid temperature rise of the latter.

Iced products: if consumed immediately after removal from the freezer compartment, will probably cause frostburns to the skin.

It is recommended to label and date each frozen package in order to keep track of the storage time.

### Hints for the storage of frozen food

Ensure that frozen food has been stored according to the food retailer's suggestion.

Once defrosted, food will deteriorate



rapidly and should not be re-frozen. Do not exceed the storage period indicated by the food manufacturer.

## **Switching off your appliance**

If the appliance needs to be switched off for an extended period, the following steps should be taken to prevent it from growing mold.

1. Remove all food.
2. Remove the power plug from the mains socket.
3. Clean and dry the interior thoroughly.
4. Ensure that all the doors are wedged
5. Open slightly to allow air to circulate.

## TROUBLESHOOTING

If you experience a problem with your appliance or are concerned that the appliance is not functioning correctly, you can carry out some easy checks before calling for service, please see below.

**Warning!** Don't try to repair the appliance yourself. If the problem persists after you have made the checks mentioned below, contact a qualified electrician, authorized service engineer or the shop where you purchased the product.

<b>Problem</b>	<b>Possible Cause &amp; Solution</b>
<b>Appliance is not working correctly</b>	Check whether the power cord is plugged into the power outlet properly.
	Check whether the "Power" function is on by pressing the "power" button for 1 second.
	Check the fuse or circuit of your power supply, replace if necessary.
	It is normal that the freezer is not operating during the defrost cycle, or for a short time after the appliance is switched on to protect the compressor.
<b>Odors from the compartments</b>	The interior may need to be cleaned.
	Some food, containers or wrapping cause odors.
<b>Noise from the appliance</b>	The sounds below are quite normal: <ul style="list-style-type: none"> <li>• Compressor running noises.</li> <li>• Air movement noise from the small fan motor in the freezer compartment or other compartments.</li> <li>• Gurgling sound similar to water boiling.</li> <li>• Popping noise during automatic defrosting.</li> <li>• Clicking noise before the compressor starts.</li> </ul>
	Other unusual noises are due to the reasons below and may need you to check and take action: <ul style="list-style-type: none"> <li>• The cabinet is not level.</li> <li>• The back of the appliance touches the wall.</li> <li>• Bottles or containers fallen or rolled.</li> </ul>
<b>The motor runs continuously</b>	Other unusual noises are due to the reasons below and may need you to check and take action: <ul style="list-style-type: none"> <li>• The cabinet is not level.</li> <li>• The back of the appliance touches the wall.</li> <li>• Bottles or containers fallen or rolled.</li> </ul>

<b>A layer of frost occurs in the compartment</b>	Check that the air outlets are not blocked by food and ensure food is placed within the appliance to allow sufficient ventilation. Ensure that the door is fully closed. To remove the frost, please refer to the "Cleaning and Care" section.
<b>Temperature inside is too warm</b>	You may have left the doors open too long or too frequently; or the doors are kept open by some obstacle; or the appliance is located with insufficient clearance at the sides, back and top.
<b>Temperature inside is too cold</b>	Increase the temperature by following the "Display controls" chapter.
<b>Doors can't be closed easily</b>	Check whether the top of the refrigerator is tilted back by 3/8~5/8 inches to allow the doors to self-close, or if something inside is preventing the doors from closing.

## DISPOSAL OF THE APPLIANCE

It is prohibited to dispose of this appliance as household waste.


Packaging materials

Packaging materials with the recycle symbol are recyclable. Dispose of the packaging into a suitable waste collection container to recycle it.

Before disposal of the appliance

1. Pull out the mains plug from the mains socket.
2. Cut off the power cord and discard with the mains plug.

**Warning!** Refrigerators contain refrigerant and gasses in the insulation. Refrigerant and gasses must be disposed of professionally as they may cause eye injuries or ignition. Ensure that tubing of the refrigerant circuit is not damaged prior to proper disposal.

	<b>Correct Disposal of this product</b>
	<p>This symbol on the product or in its packing indicates that this product may not be treated as household waste. Instead, it should be taken to the appropriate waste collection point for the recycling of electrical and electronic equipment. By ensuring this product is disposed of correctly, you will help prevent potential negative consequences for the environment and human health, which could otherwise be caused by the inappropriate waste handling of this product. For more detailed information about the recycling of this product, please contact your local council, your household waste disposal service, or the shop where you purchased the product.</p>

## CUSTOMER SUPPORT

---

Visit our website to contact us, find answers to Frequently Asked Questions, and for other resources which may include an updated version of this user's manual.



If you wish to contact us by phone, please be sure to have your model number and serial number ready and call us between 9:00am and 6:00pm ET, at +1 866-954-4440.

Keep tabs on Impecca's newest innovations and enter contests via our social network feeds:

 [www.facebook.com/Impecca/](http://www.facebook.com/Impecca/)

 [www.instagram.com/impecca/](http://www.instagram.com/impecca/)

 [@impeccausa](https://twitter.com/impeccausa)

# ONE-YEAR LIMITED APPLIANCE WARRANTY (US)

Impecca™ warrants this product against defects in material and workmanship to the original purchaser as specified below.

**PARTS AND LABOR– if the product is determined to have a manufacturing defect, within a period of one year from the date of the original purchase, Impecca™, at its own discretion, will repair or replace the product parts at no charge to you in the U.S.A.**

To obtain warranty service by an authorized Impecca™ service center, please email us at: [service@impecca.com](mailto:service@impecca.com) to obtain a Repair and Maintenance Authorization (RMA) number and received instructions on how the repair and/or replacement procedure will take place.

**Any glass materials included with the appliance will be covered for a period of 60 days from purchase.**

Impecca™ specifically excludes from this warranty any non-electric/mechanical attachments, accessories and disposable parts including but not limited to outside case, connecting cables, batteries and AC adapters. Impecca™ reserves the right to repair or replace defective products with the same, equivalent or newer models.

We reserve the right to either repair or replace product at our discretion. Replacement may be either new or refurbished and while every endeavor will be made to ensure it is the same model, if not possible it will be equal or higher specification.

Normal "Wear and Tear" is not covered by this warranty. Further, Impecca™ hereby reserves the right to determine "Wear and Tear" on any and all products. Tampering or opening the product casing or shell will void this warranty in its entirety.

Exclusions: This warranty does not cover the following:

1. Any product that has a defaced or covered serial number.
2. Products that have been transferred to a second owner.
3. Rust on the interior or exterior of the unit.
4. Products listed as "As-Is" or "Refurbished."
5. Food loss due to any product failure.
6. Window air conditioners installed in a wall.
7. The product if used in a commercial setting.
8. Service calls that do not involve product malfunction.
9. Service calls for a product ruined by not following the provided instructions.

10. Service calls to correct improper installation.
11. Costs associated with making the product accessible for servicing (including but not limited to removal of trim/molding/cabinetry, etc.)
12. Service calls to replace any consumables such as light bulbs, filters, etc.
13. Surcharges that may apply to service calls on weekends, nights, holidays. Damages to the finish of appliance or household furnishings due to installation of appliance.
14. Damages caused by any of the following: Acts of God; fires; misuse; accidents; incorrect power supply; service performed by unauthorized persons; use of non-genuine Impecca parts, etc.

ALL IMPLIED WARRANTIES, INCLUDING IMPLIED WARRANTIES OF MERCHANTABILITY AND FITNESS FOR A PARTICULAR PURPOSE ARE LIMITED IN DURATION TO 1 YEAR FROM THE DATE OF THE ORIGINAL RETAIL PURCHASE OF THIS PRODUCT.

THESE WARRANTIES AND REMEDIES ARE THE SOLE AND EXCLUSIVE WARRANTIES AND REMEDIES IN CONNECTION WITH THE SALE AND USE OF THE PRODUCT. NO OTHER WARRANTIES, ORAL OR WRITTEN, EXPRESSED OR IMPLIED, ARE GIVEN.

IMPECCA™ IS NOT RESPONSIBLE OR LIABLE FOR ANY DAMAGE, WHETHER SPECIAL, INCIDENTAL, CONSEQUENTIAL, DIRECT OR OTHERWISE, OR WHETHER KNOWN OR SHOULD HAVE BEEN KNOWN TO IMPECCA™, INCLUDING LOST PROFITS, GOODWILL, AND PROPERTY AND PERSONAL INJURY RESULTING FROM ANY BREACH OF WARRANTY, THE INABILITY TO USE THE PRODUCT OR UNDER ANY LEGAL THEORY IN CONTRACT OR TORT. IMPECCA LIABILITY IS LIMITED TO THE ACTUAL PURCHASE PRICE PAID TO THE RETAIL SELLER OF THE DEFECTIVE PRODUCT.

No Impecca™ dealer, agent or employee is authorized to make any modification, extension, change or amendment to this warranty without the written consent and authorization from Impecca™.

Some states do not allow the exclusion or limitation of implied warranties or liability for incidental or consequential damages, or do not allow a limitation on how long an implied warranty lasts, so the above limitations or exclusions may not apply to you. This warranty gives you specific legal rights, and you have other rights, which vary from state to state.

*Note: Our Warranty center services only to Continental U.S.A.*

