

# QUICK START GUIDE WHIRLPOOL® TOP LOADING WASHING MACHINE

## OPERATING INSTRUCTIONS

### WARNING



#### Fire Hazard

Never place items in the washer that are dampened with gasoline or other flammable fluids.

No washer can completely remove oil.

Do not dry anything that has ever had any type of oil on it (including cooking oils).

Doing so can result in death, explosion, or fire.

**WARNING:** To reduce the risk of fire, electric shock, or injury to persons, read the IMPORTANT SAFETY INSTRUCTIONS, located in your appliance's Owner's Manual, before operating this appliance.

#### NOTES:

- Not all features and cycles are on all models, and control panel appearance may vary.
- If your model has physical buttons, make sure to press the button firmly.
- At cycle completion, your setting and option choices will be remembered for the next cycle. However, if power to the washer is lost, the settings and options will go back to the factory defaults.

#### Step 1. Add HE Detergent

**NOTE:** See the "Adding Laundry Products" section for more information on adding HE detergent, fabric softener, and/or bleach.

#### Step 2. Load Clothes



For best results, load garments in loose heaps evenly around basket wall.

**Step 3. Close Lid; then Select Cycle and Turn on the machine by pressing the Start/Pause button or rotating the Cycle selection knob; LEDs 2, 3, 4, and 5 will all light up, LED 1 will flash, and LED 6 will remain off.**

#### Step 4. Select Settings.



#### Step 5. Press Start/Pause/Cancel



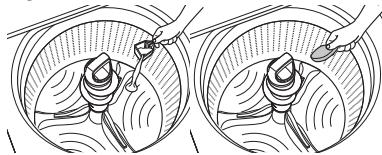
## ADDING LAUNDRY PRODUCTS

**IMPORTANT:** Using non-HE detergent will likely result in longer cycle times and reduced rinsing performance. It may also result in component malfunction and, over time, buildup of mold or mildew. HE detergents should be low-sudsing and quick-dispersing to produce the right amount of suds for the best performance.

#### ADDING HE DETERGENT TO BASKET

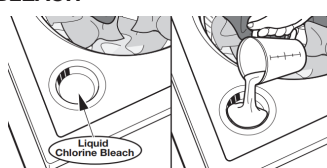
Add a measured amount of HE detergent or single-dose laundry packets into the basket. If using oxi-type boosters, color-safe bleach, or fabric softener crystals, add to the bottom of the washer basket before adding clothes.

**NOTE:** Follow the manufacturer's instructions to determine the amount of laundry products to use.



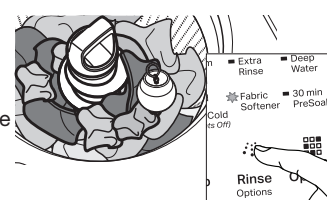
#### ADDING LIQUID CHLORINE BLEACH

Do not overfill, dilute, or use more than 1 cup (236 mL). Do not use color-safe bleach or oxi products in the same cycle with liquid chlorine bleach.



#### ADDING LIQUID FABRIC SOFTENER

If you desire to use liquid fabric softener with this washer, Whirlpool suggests using the Downy Ball® dispenser. Pour a measured amount of liquid fabric softener into the Downy Ball® dispenser, pull the ring tightly to seal it, and place on top of load. Follow manufacturer's directions for correct amount of fabric softener based on your load size. Then use the Rinse Options button to select Fabric Softener. The Downy Ball® dispenser will automatically release the fabric softener at the correct time in the cycle. For questions on using the Downy Ball® dispenser visit [www.downy.com](http://www.downy.com).



#### ADDING LIQUID FABRIC SOFTENER MANUALLY

Select the Fabric Softener option on the control panel before starting a cycle. During the final rinse, wait until the washer has completed filling, press the Start/Pause button to pause the washer. Lift the lid and add the recommended amount of liquid fabric softener. Close the lid, press and hold the Start/Pause button to resume the cycle.



Designed to use only HE High Efficiency detergents.

## Button Descriptions

### SOIL LEVEL (on some models)

Select the setting most suitable for your load. For heavily soiled and sturdy fabrics, select Heavy Soil Level for more wash time. For lightly soiled and delicate fabrics, select Light or Extra Light Soil Level for less wash time. A lighter soil-level setting will help reduce tangling and wrinkling.

### WASH TEMP

Wash Temp senses and maintains uniform water temperatures by regulating incoming hot and cold water.

Select a wash temperature based on the type of fabric and soils being washed. For best results, follow the garment label instructions using the warmest wash water safe for your fabric.

#### NOTES:

- On some models and cycles, warm and hot water may be cooler than your previous washer.
- Even in a cold- or cool-water wash, some warm water may be added to the washer to maintain a minimum temperature. All rinses are cold.

### WASH CYCLE KNOB

Use the Wash Cycle knob to select available cycles on your washer. Turn the knob to select a cycle for your laundry load. See online "Cycle Guide" for detailed descriptions.

### RINSE OPTION

Select the option most suitable for your load. Select Auto with Extra Rinse, Deep Water Rinse, or Deep Water with Extra Rinse if using fabric softener during a cycle. It ensures that fabric softener is added at the correct time in the rinse for even distribution.

### WATER LEVEL

Set the Water Level knob to the Auto Sensing setting and the washer will automatically sense the appropriate water level for the load size and type.

Set the Water Level knob to the Deep Water Wash setting and the washer will automatically add more water to any cycle at any time during the wash process.

**NOTE:** Expect longer cycle times due to extended fill times when using the Deep Water Wash option.

### START/PAUSE BUTTON

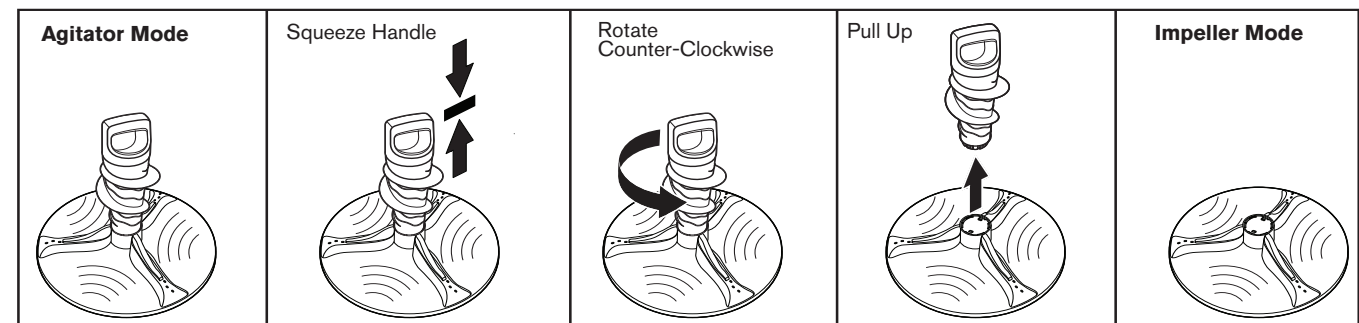
Press to start the selected cycle. Press again to pause the cycle and unlock the lid. Close the lid and press to restart the cycle. Press and hold to cancel a cycle and pump out the water.

**NOTE:** If the washer is spinning, it may take several minutes to unlock the lid.

### PROGRESS LIGHTS

The Progress lights show the progress of a cycle. At each stage of the process, you may notice sounds or pauses that are different from traditional washers.

## 2-IN-1 REMOVABLE AGITATOR



- Keep it in (Agitator mode) when you want increased mechanical action to remove and rinse away loose soils. You can use this mode anytime but it's especially suited for everyday mixed loads.
- Take it out (Impeller mode) when you need added space and/or a thorough, gentle clean. You can use this mode anytime but it's especially suited for bulky items such as bedding and delicate items such as undergarments.

#### USING THE REMOVABLE AGITATOR

- Squeeze handle, rotate counter-clockwise, and pull up to remove.
- Push down and rotate clockwise to re-install. The agitator should lock into place.

For detailed installation instruction and maintenance information, winter storage, and transportation tips, please see the Owner's Manual included with your machine.

## Cycle Guide - Normal Cycle

For best fabric care, choose the cycle that best fits the load being washed. Recommended settings for performance are shown in bold. Not all cycles and options are available on all models. Not all settings options are available on each cycle.

Items to Wash:	Cycle:	Temperature:	Description:
Cottons, linens, and mixed-garment loads	Normal	Hot <b>Warm</b> Cool Cold Tap Cold	Use this cycle for normally soiled cottons and mixed-fabric loads. A high spin speed is the default for this cycle.

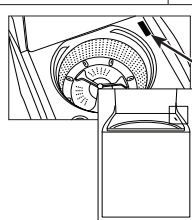
#### NOTES

- All rinses are cold.
- Normal cycle is recommended for washing normally soiled cotton or linen clothes. This clothes washer's government energy certifications were based on the Normal (Medium Soil) cycle with all wash temperature selections and water fill levels offered in the cycle. It was tested as an Adaptive Automatic and Deep Water Fill Control System clothes washer with the Agitator installed. The settings as shipped are Normal (Medium Soil) cycle, Warm Wash Temp, Water level Auto Sensing and Rinse Option Auto Sensing.
- If the washer detects an out-of-balance condition it will run a recovery routine to re-distribute the load before spin. During this time the spin and lid lock status indicators will both illuminate.

## ASSISTANCE OR SERVICE AND ADDITIONAL INFORMATION

For information on any of the following items, a full cycle guide, warranty, detailed product dimensions, or for complete instructions for use and installation, please visit [www.whirlpool.com/owners](http://www.whirlpool.com/owners), or in Canada [www.whirlpool.ca/owners](http://www.whirlpool.ca/owners). This may save you the cost of a service call. **Note:** Spanish literature is available at the web address above / **Nota:** Literatura en Español está disponible en la dirección electrónica mencionada.

Register Product	Schedule Service	How To's & FAQ	Manuals & Downloads	Add Service Plan	Parts	Accessories



Model & Serial Number Tag location

To speak with a customer service representative or if you have additional questions, call us toll free at **1-866-698-2538** or in Canada call **1-800-807-6777**. You can write with any questions or concerns at:

Whirlpool Brand Appliances  
Customer eXperience Center  
533 Benson Road  
Benton Harbor, MI 49022-2692

Whirlpool Brand Appliances  
Customer eXperience Center  
Unit 200-6750 Century Ave  
Mississauga, Ontario L5N 0B7

Please include a daytime phone number in your correspondence.