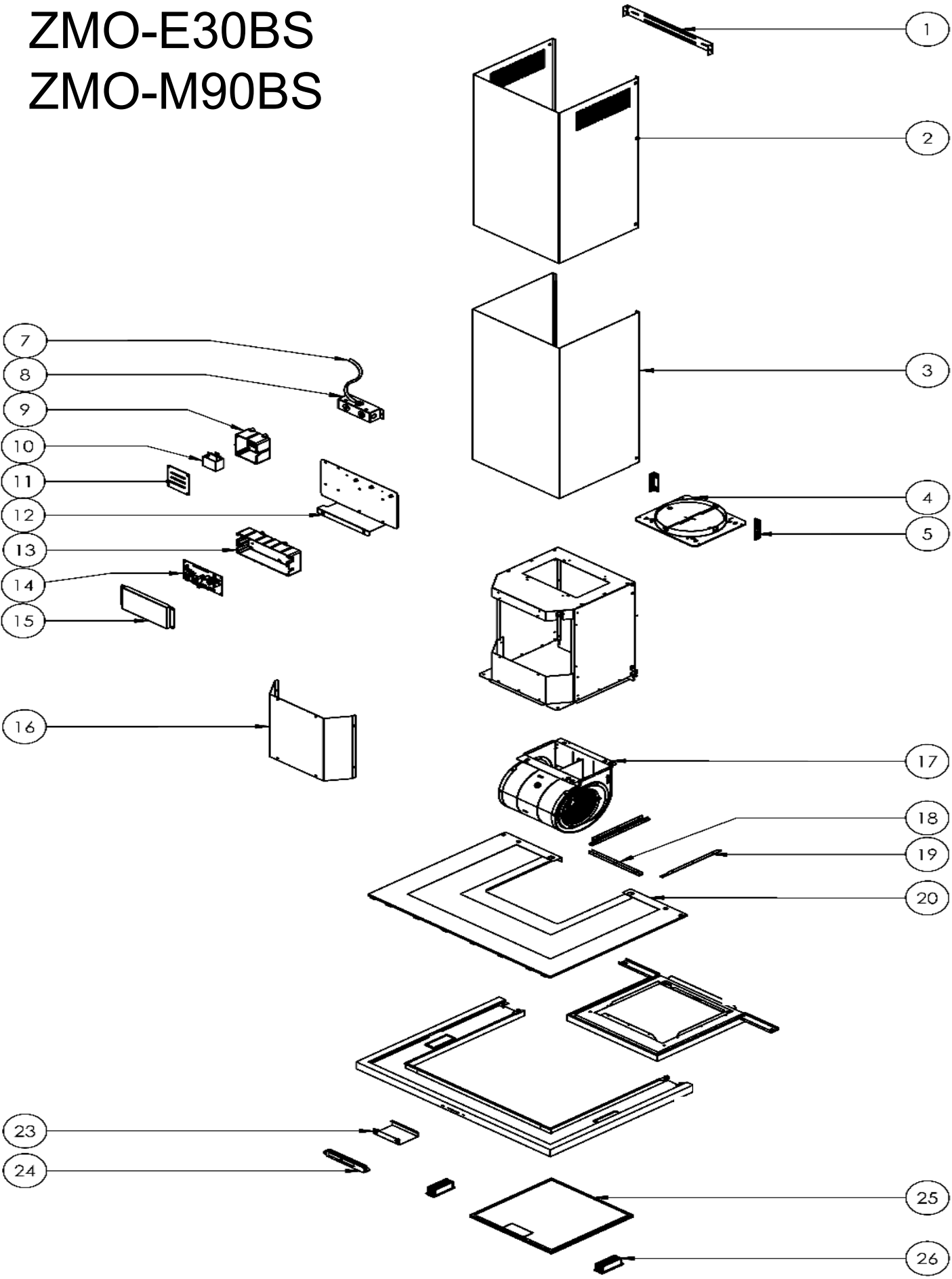


ZMO-E30BS ZMO-M90BS



ZEPHYR Modena Wall

ZMO-E30BS, ZMO-M90BS

Ref #	Part #	Description	Qty.
1	54110071	Duct Cover Bracket	1
2	50050111	Upper Duct Cover	1
3	50050112	Lower Duct Cover	1
4	54050080	8in Round Collar w/Damper	1
5	54140094	Mounting Bracket	2
7	11030139	Electrical Cord	1
8	56200080	Electrical Junction Box	1
9	56200079	Capacitor Box	1
10	12050028	Capacitor	1
11	56210066	Capacitor Box Cover	1
12	54140299	Electronics Mounting Bracket	1
13	56200051	Component Box	1
14	11010124	Control Board, ZMO-E30BS	1
14	11010123	Control Board, ZMO-M90BS	1
15	56210073	Component Box Cover	1
16	54210003	Motor Housing Cover	1
17	12120070	Motor	1
20	50300090	Glass Canopy, ZMO-E30BS	1
20	50300091	Glass Canopy, ZMO-M90BS	1
23	54140106	Switch Holding Bracket	1
24	11000127	Switch Assembly	1
25	50200042	Aluminum Mesh Filter	1
26	Z0B0048	LumiLight LED, 6W, DC (30"x2)	4
26-1	11030150	LED Wiring, ZMO-E30BS	1
26-1	11030145	LED Wiring, ZMO-M90BS	1
27	05000074	Hardware Packet	1

FEB21.0201