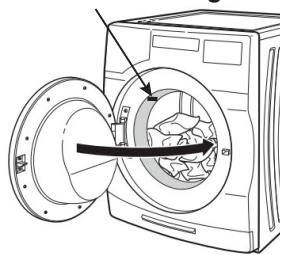


QUICK START GUIDE WHIRLPOOL® FRONT LOADING WASHING MACHINE

PRODUCT REGISTRATION & OWNER INFORMATION

Find your serial tag on your product, as shown in the diagram.



You can access the full Installation, User Maintenance and Operating Instructions, Warranty details, and more by visiting our website at www.whirlpool.com/owners or www.whirlpool.ca/owners. This may save you the cost of a service call. To receive a free printed copy of the information online, call us at 1-866-698-2538 (U.S.A.)/1-800-807-6777 (Canada) or write to us at:

Whirlpool Brand Appliances
Customer eXperience Center
533 Benson Road
Benton Harbor, MI 49022-2692

Whirlpool Brand Appliances
Customer eXperience Center Unit
200-6750 Century Ave.
Mississauga, Ontario L5N 0B7

Register to access warranty information and receive important notifications related to your product. Scan the Photo Registration Card to register your product.

WARNING: To reduce the risk of fire, electric shock, or injury to persons, read the IMPORTANT SAFETY INSTRUCTIONS, located in your appliance's Owner's Manual, before operating this appliance.

OPERATING INSTRUCTIONS

⚠ WARNING



Fire Hazard

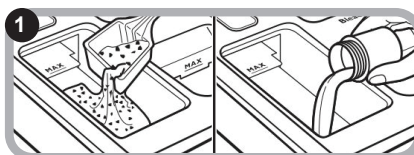
Never place items in the washer that are dampened with gasoline or other flammable fluids.

No washer can completely remove oil.

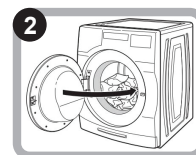
Do not dry anything that has ever had any type of oil on it (including cooking oils).

Doing so can result in death, explosion, or fire.

WARNING: Do not wash water resistant or water repellent type clothing. Failure to closely follow these instructions may result in an abnormal vibrating and out-of-balance condition that could result in physical injury, property damage and/or appliance damage.



1 Add HE Detergent & Laundry Products to Dispenser then close the dispenser drawer.



2 Sort & Load Laundry then close the door.



3 Touch Power to Turn On the Washer.



4 Select the Desired Cycle for your Load.



5 Adjust Cycle Setting, if desired.



6 Select Additional Options.

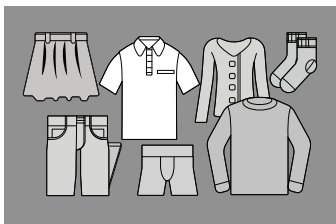


7 Touch and Hold Start/Pause to Begin Cycle.

NOTE: Before washing clothes for the first time, add liquid or powdered HE detergent to the detergent dispenser. Choose the Quick Wash cycle and run it without clothes. Use only HE detergent. This initial cycle serves to ensure the interior is clean and the dispenser drawer is ready for use before washing clothes.

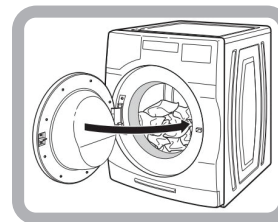
NOTE: Not all cycles, settings or options are available with all models.

CHOOSING THE RIGHT CYCLE



NOTE: Normal cycle with Warm water is recommended for cottons, linens and mixed garment loads.

LOADING RECOMMENDATIONS



Add, load loosely. Items need to move freely for best cleaning.